



AREAS ADVERTISEMENT 2022

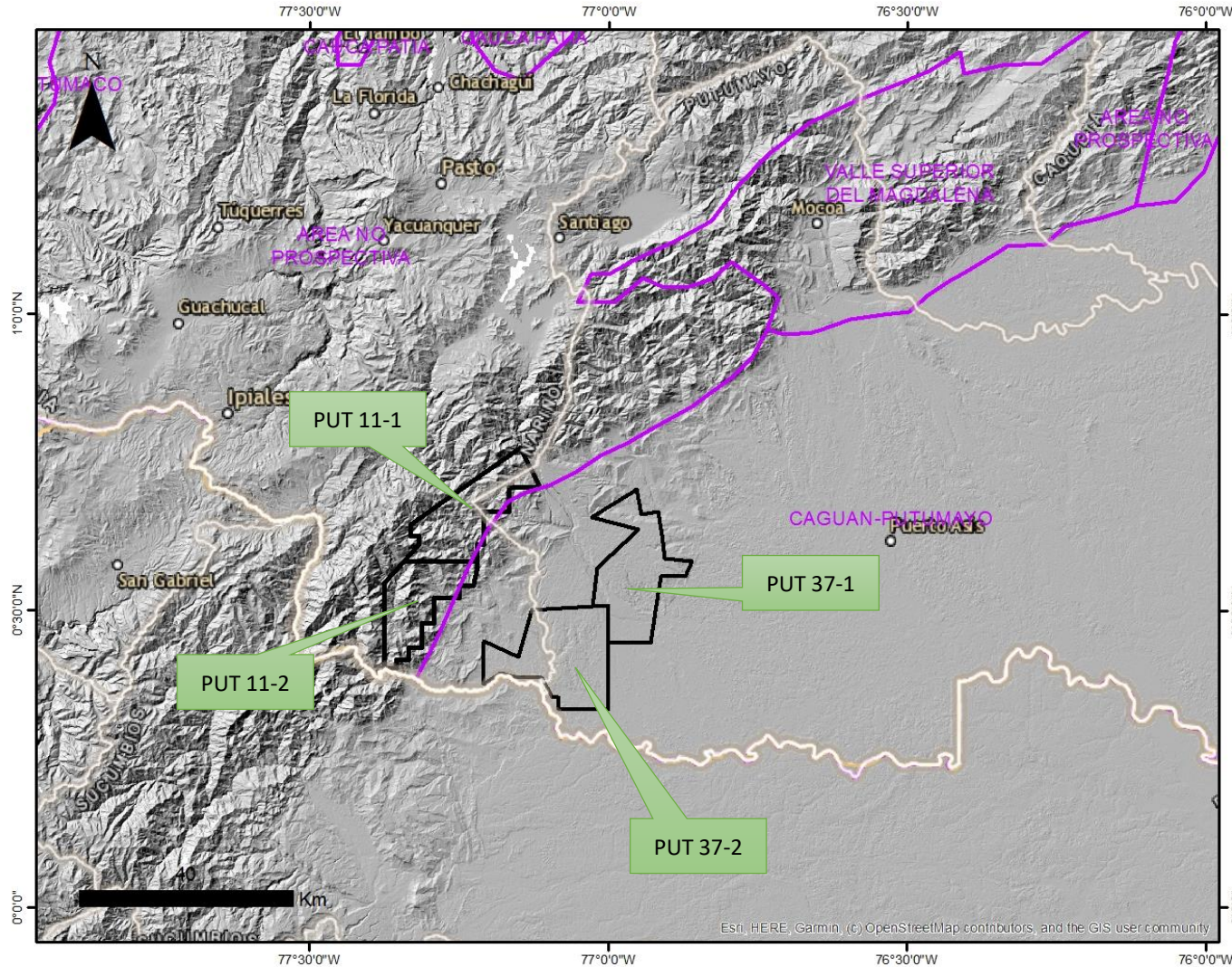
**AVAILABLE AREA IN PUTUMAYO BASIN
(PUT 11-1, PUT 11-2, PUT 37-1, PUT 37-2)**

May 27th 2022

Content

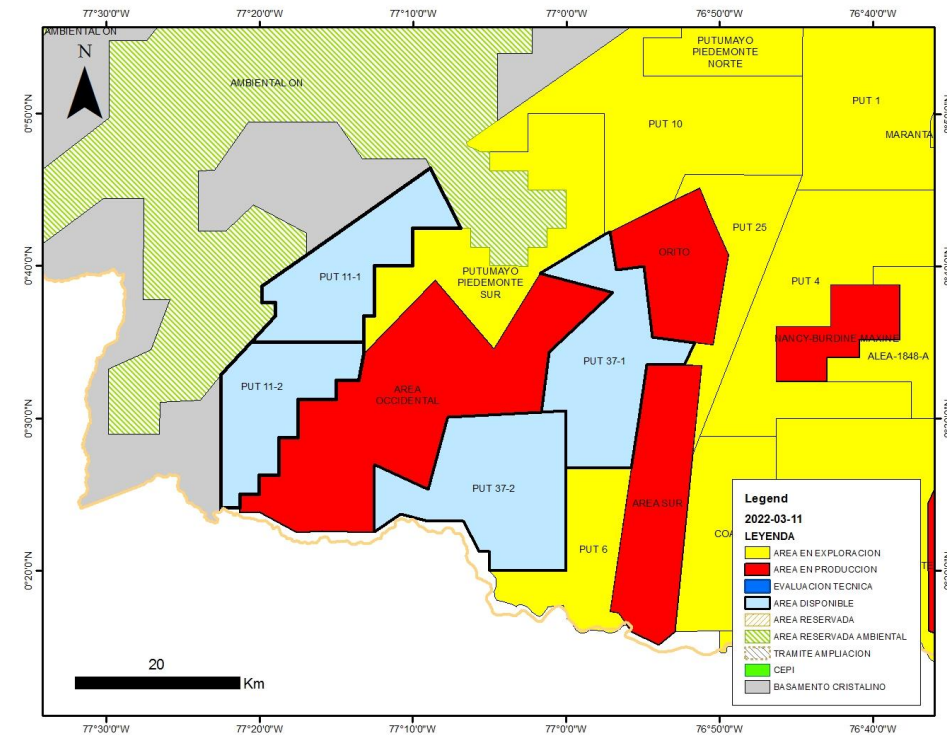
- Location
- Infrastructure
- Database – Available Information
- Geological Framework
- Wells
- Prospectivity
- Conclusions and Recomendations

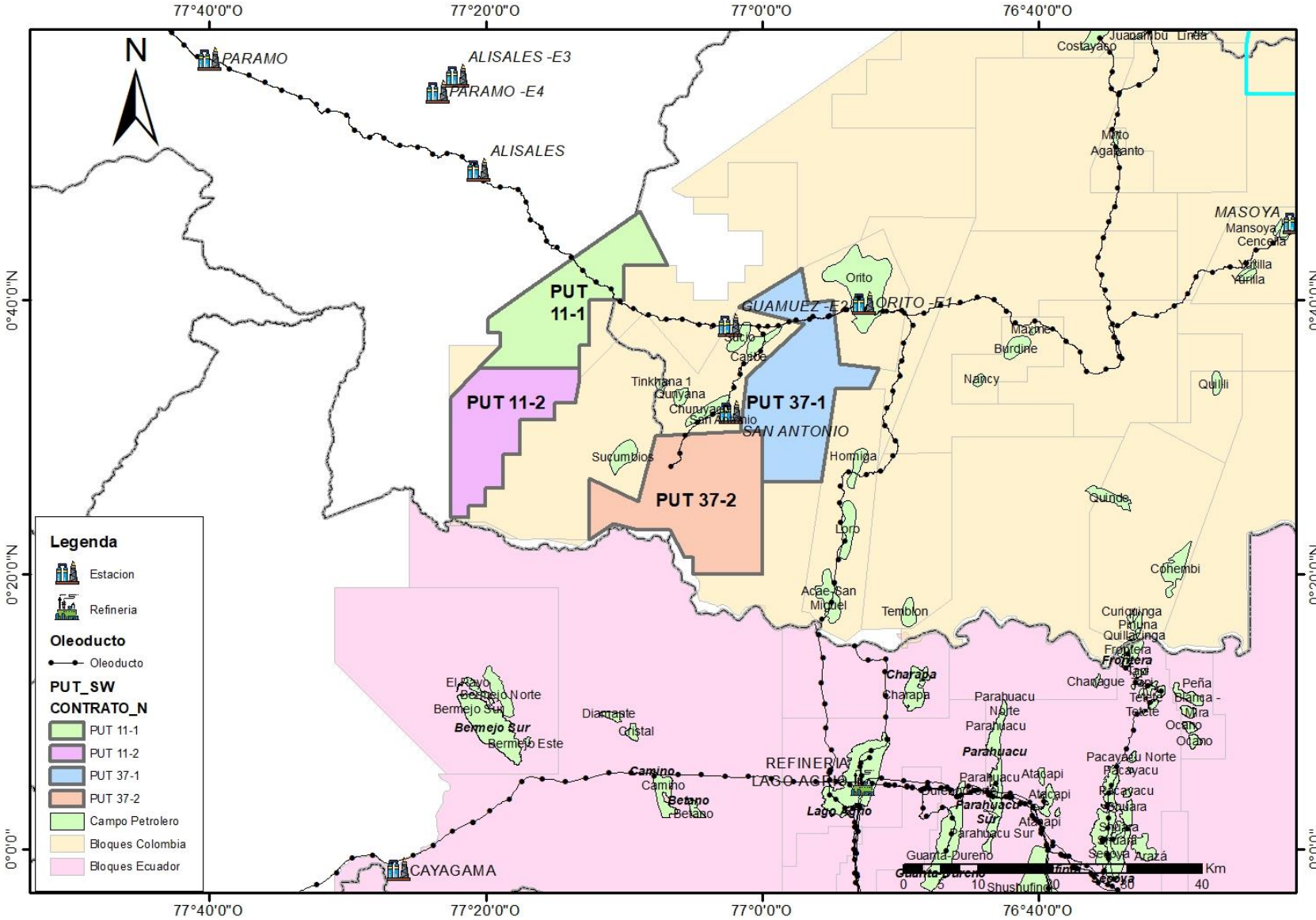
Location



- PUT 37-1 and PUT 37-2 are located in the Putumayo department, near to Orito, Loro-Acae oil fields.
- PUT 11-1 and PUT 11-2 are located mainly in Nariño department

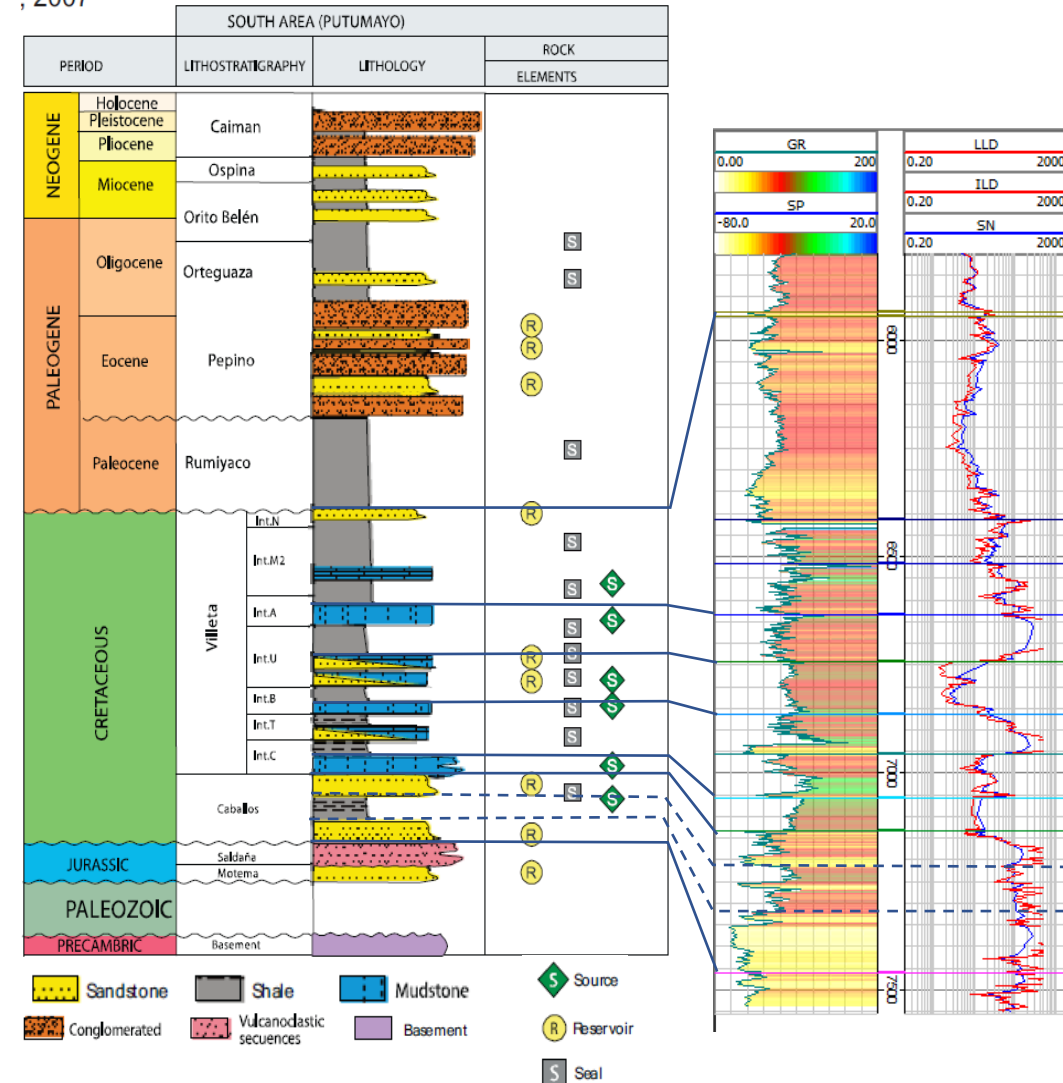
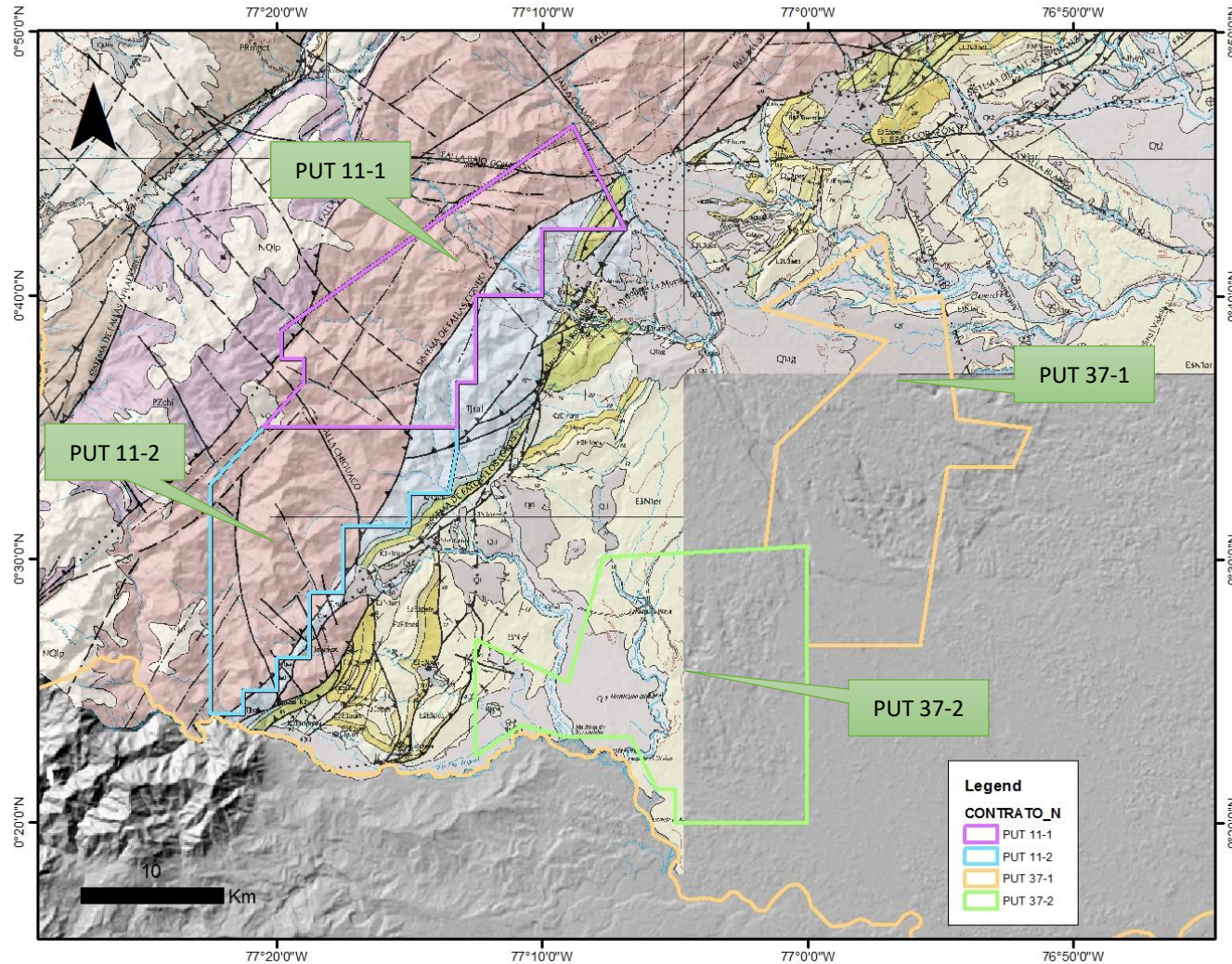
NAME	AREA_HA
PUT 11-1	21840.8
PUT 11-2	19308.4
PUT 37-1	26531.3
PUT 37-2	30329.9



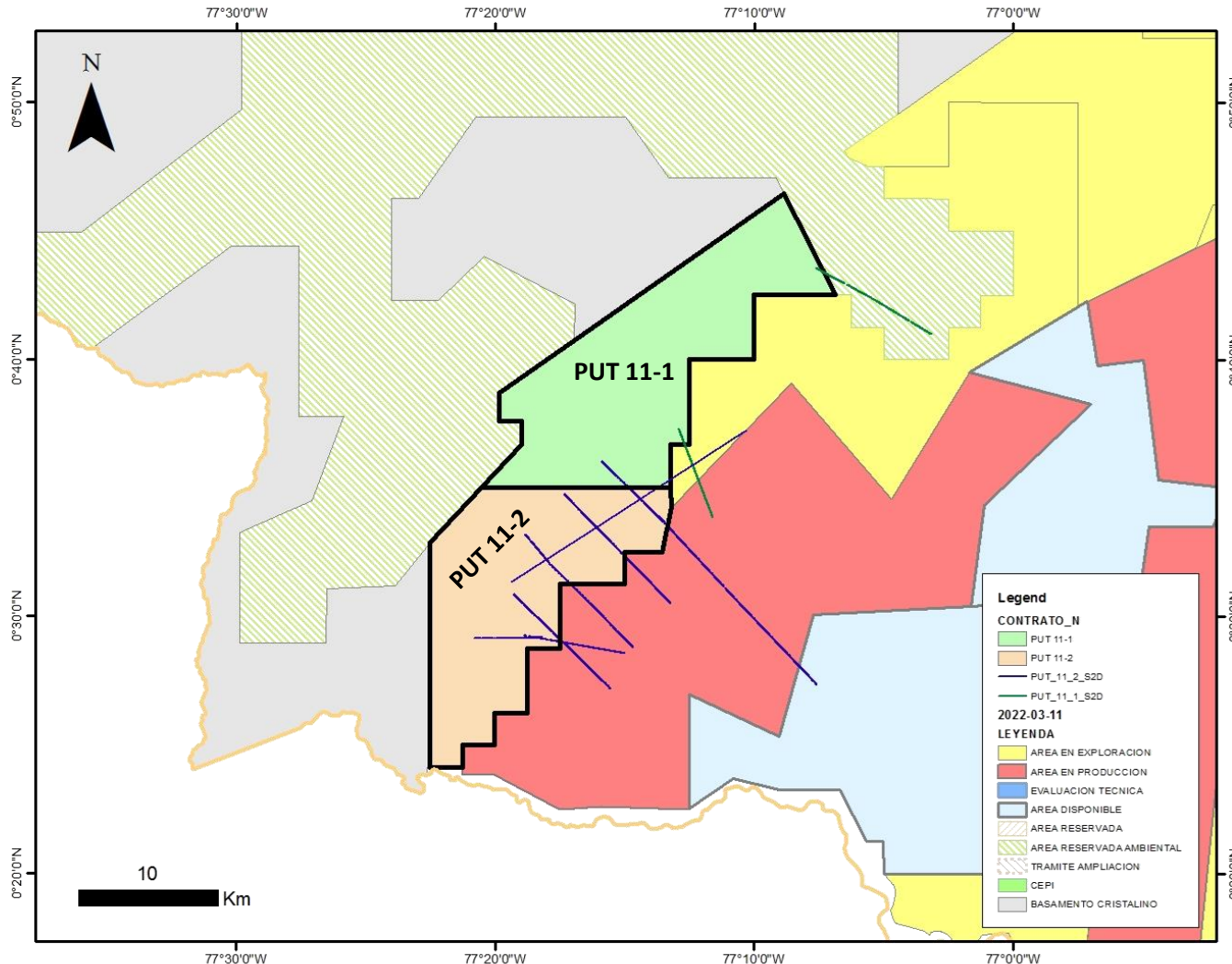


- PUT 37-1 & PUT 37-2 is among the production areas of
 - East zone (Orito, Hormiga, Loro and Acae-San Miguel Oil fields)
 - West Zone (Sucio, Caribe, Churuyaco, San Antonio, Quiriyana, Sucumbios oil fields)
- PUT 37-1 & PUT 37-2 Nearby facilities are:
 - San Antonio Station
 - Guamuez-E2 Station
 - Orito facilities
 - Sucumbios-Orito pipeline
 - Lago Agrio-Orito pipeline
 - OTA (Trans-Andean pipeline)

Geological Framework



Database – Available Information (PUT 11-1, PUT 11-2)



No Wells

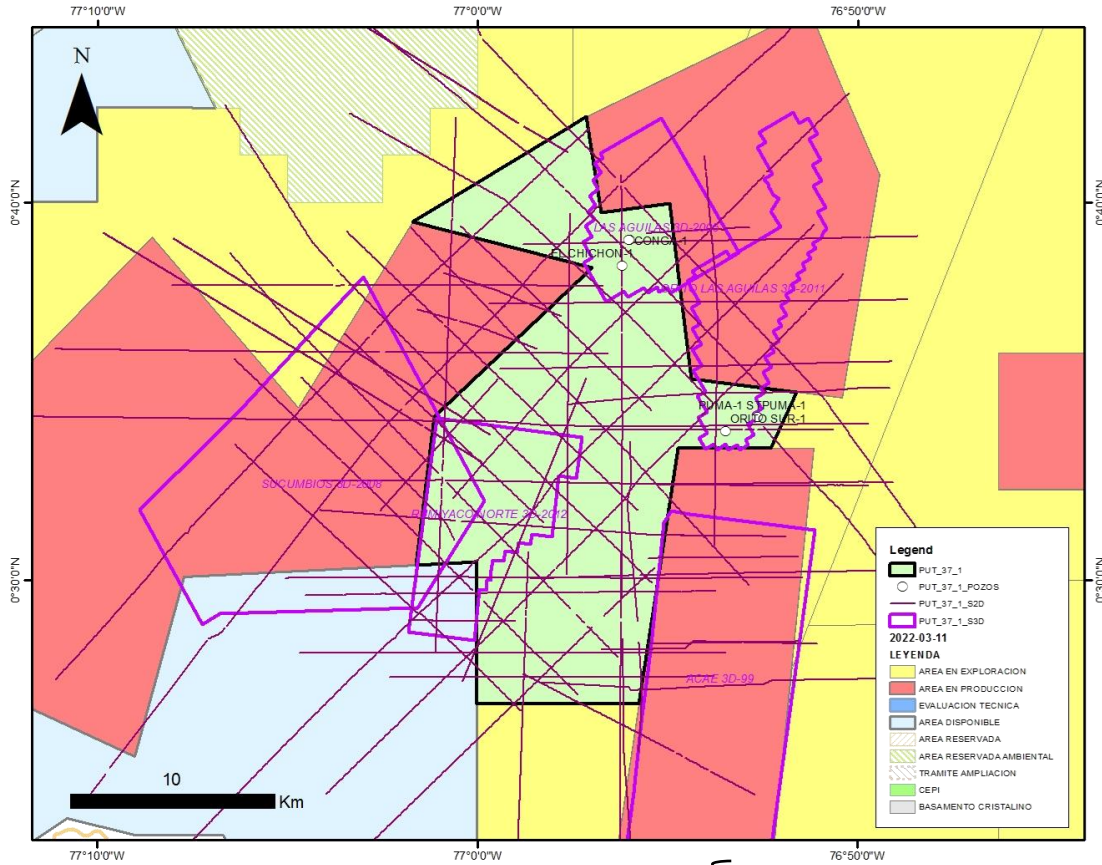
2D Seismic

PUT 11-1

- 2 seismic programs
- 4 Profiles
- 5.5 Km coverage

PUT 11-2

- 2 seismic programs
- 8 Profiles
- 86.9 Km coverage



6 Wells

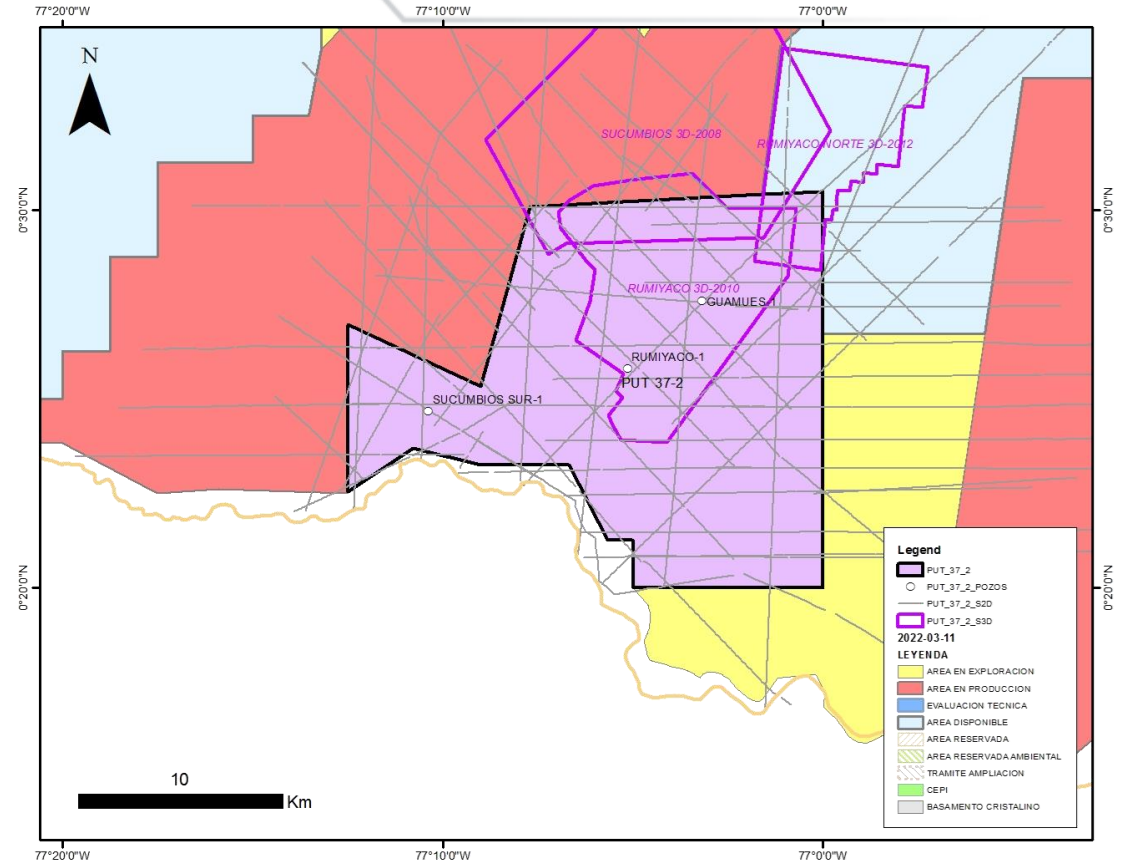
- Conga-1
- Gurania-1
- El Chichon-1
- Orito Sur-1
- Puma-1 y Puma 1 ST

2D Seismic

- 9 seismic programs
- 60 Profiles
- 425.7 Km coverage

3D Seismic

- 5 seismic programs
- 69 Km² coverage



3 Wells

- Guamuez-1
- Rumiyaço-1
- Sucumbio Sur-1

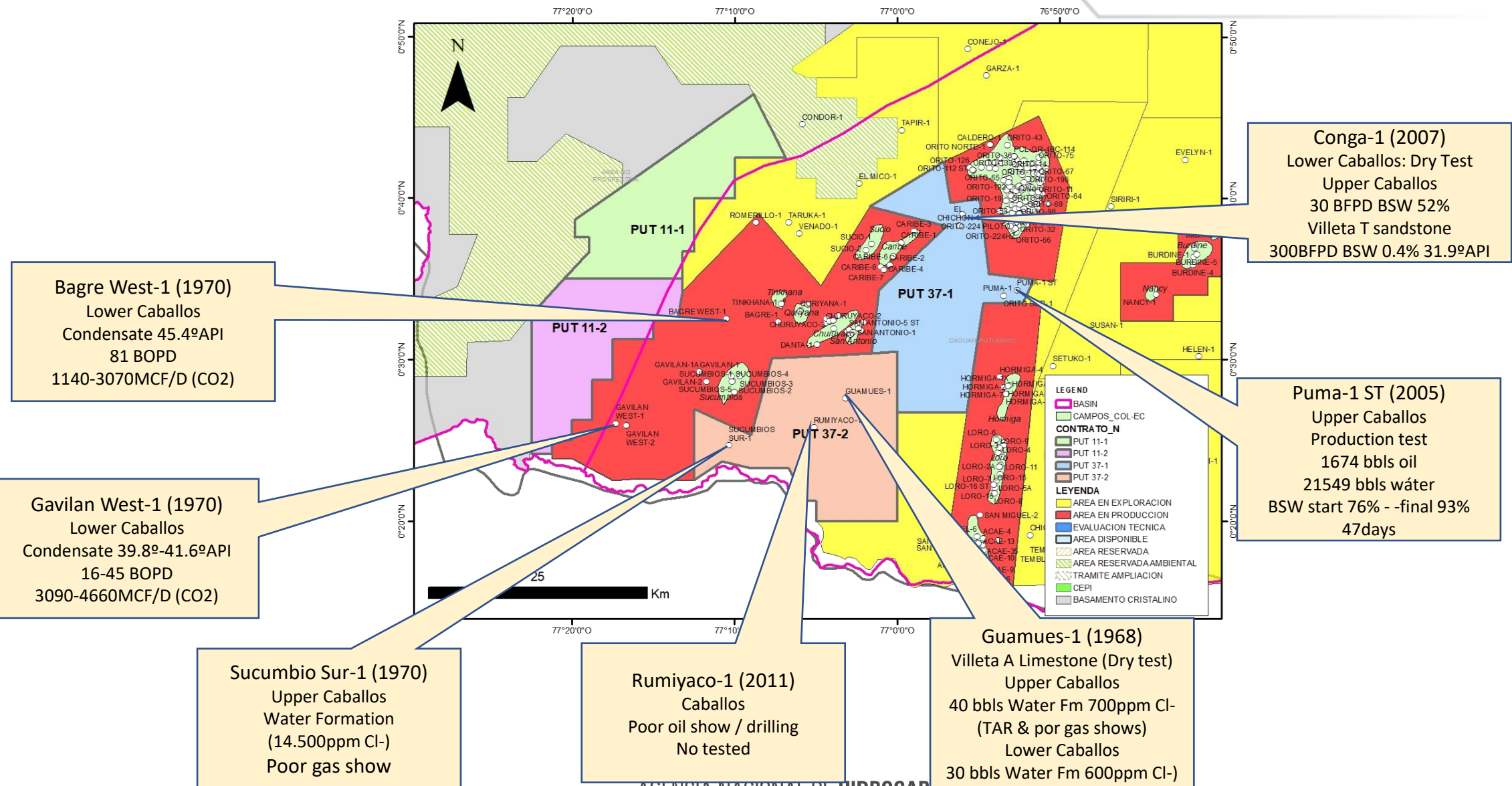
2D Seismic

- 7 seismic programs
- 57 Profiles
- 465 Km coverage

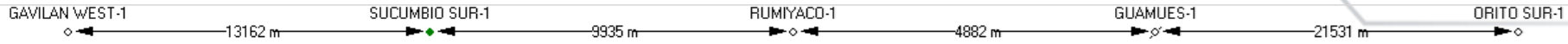
3D Seismic

- 3 seismic programs
- 98.3 Km² coverage

Nearby wells

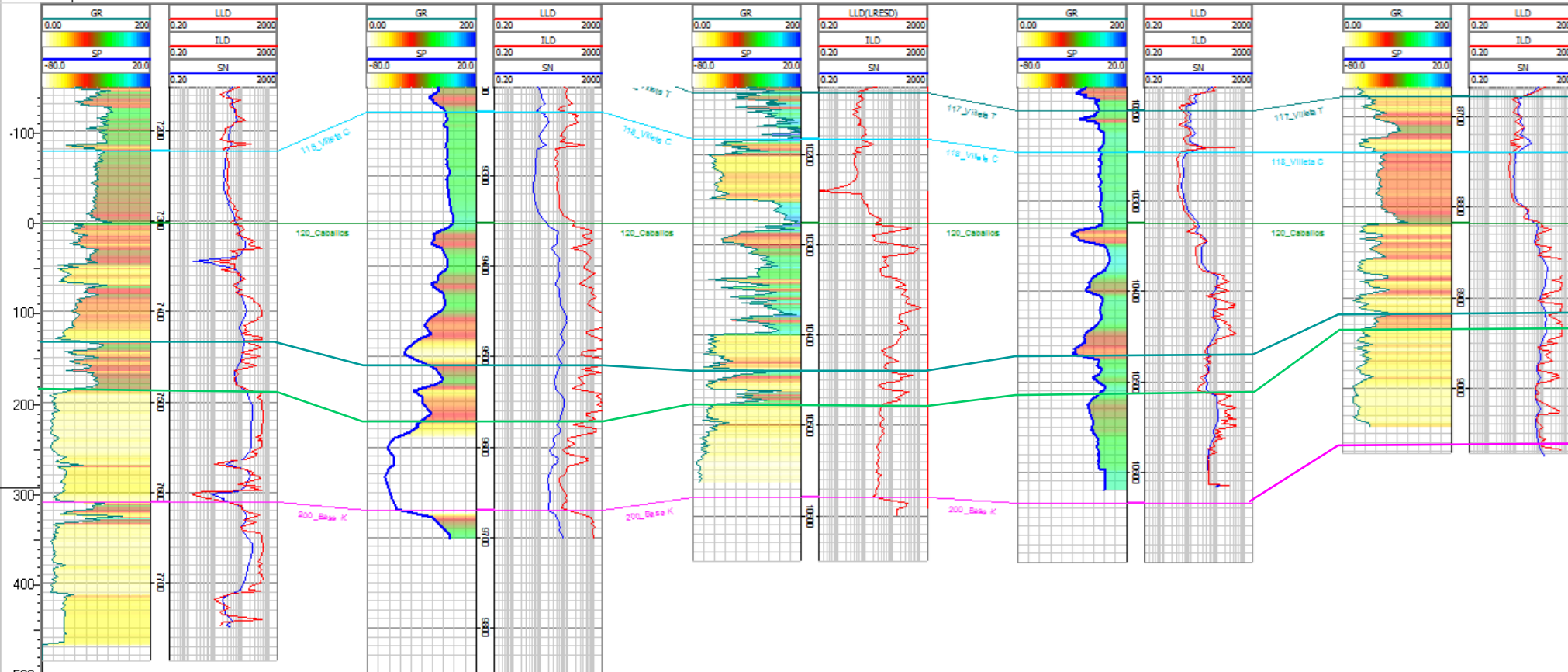


Well Correlation (Caballos Fm Datum)

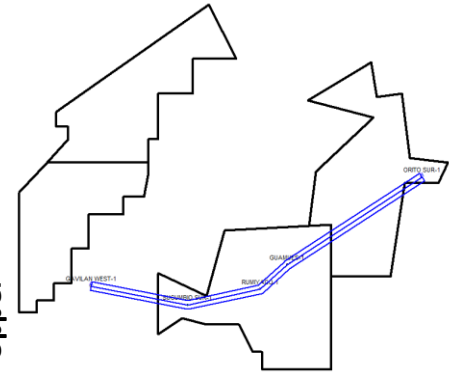


W

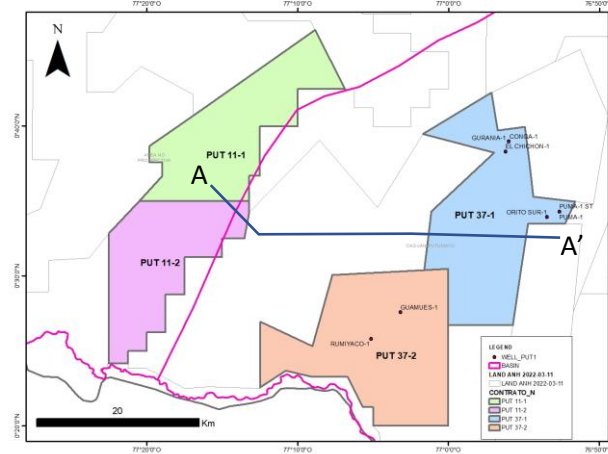
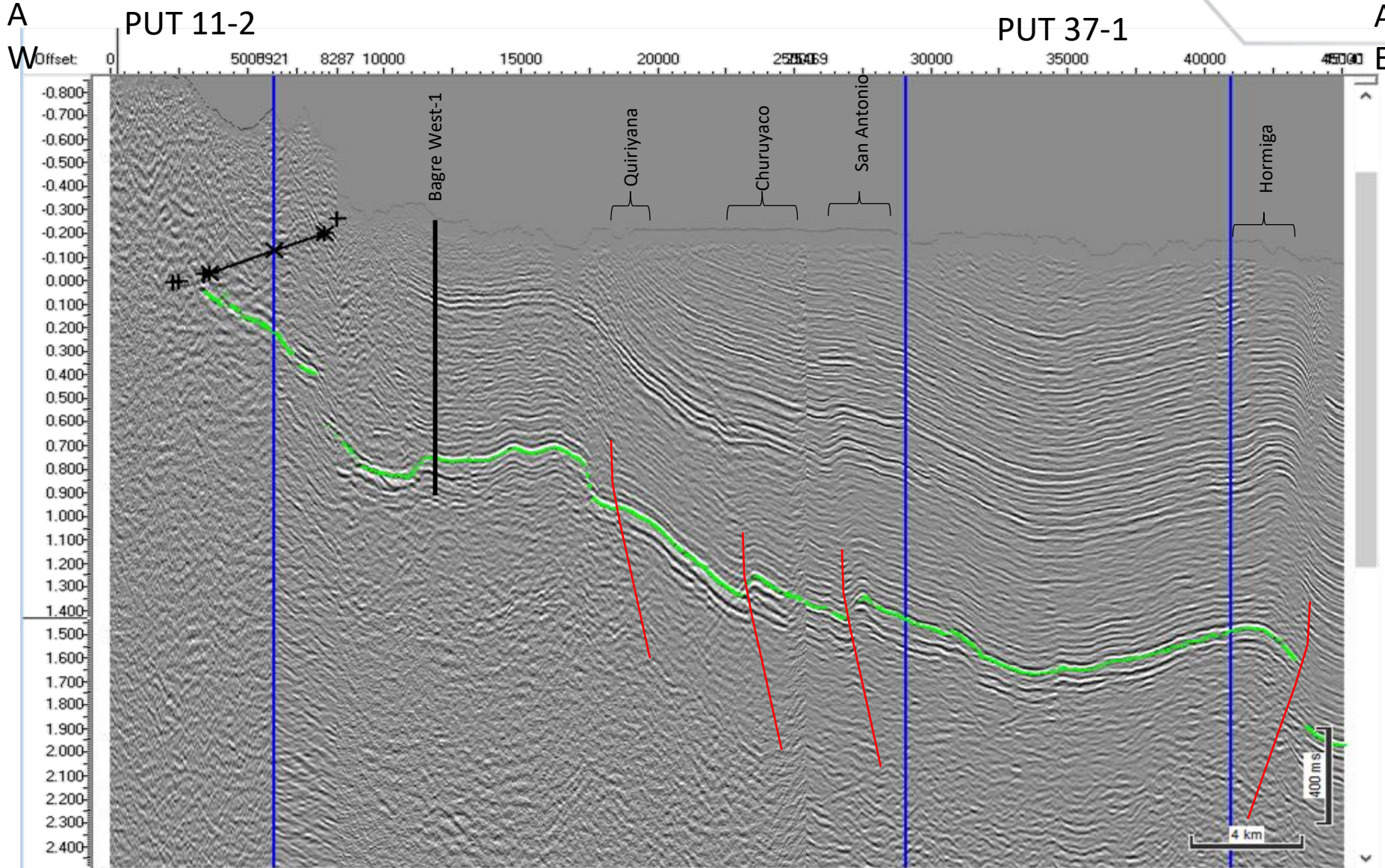
E



Lower M Upper

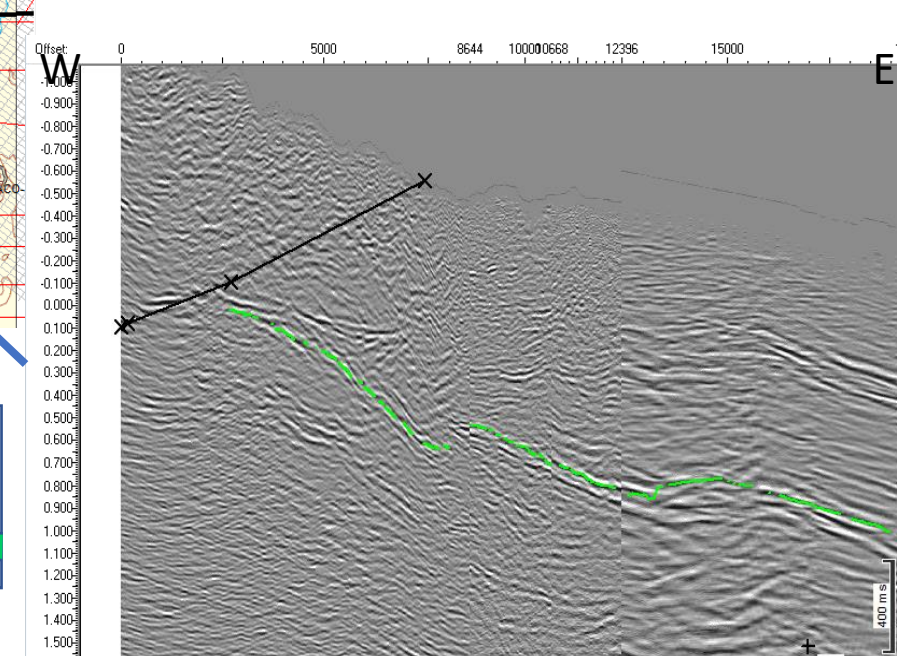
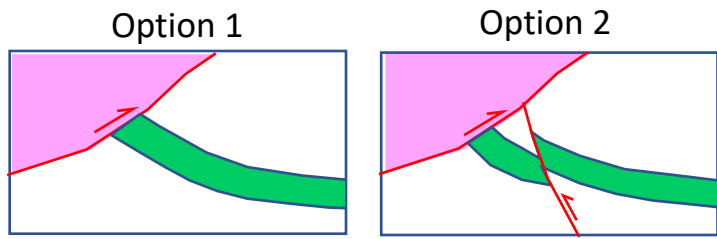
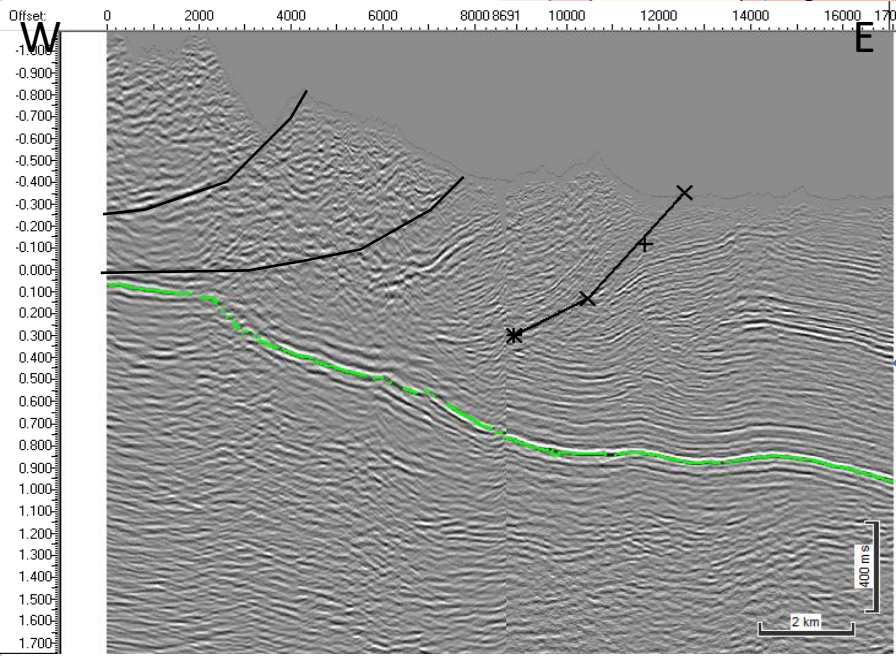
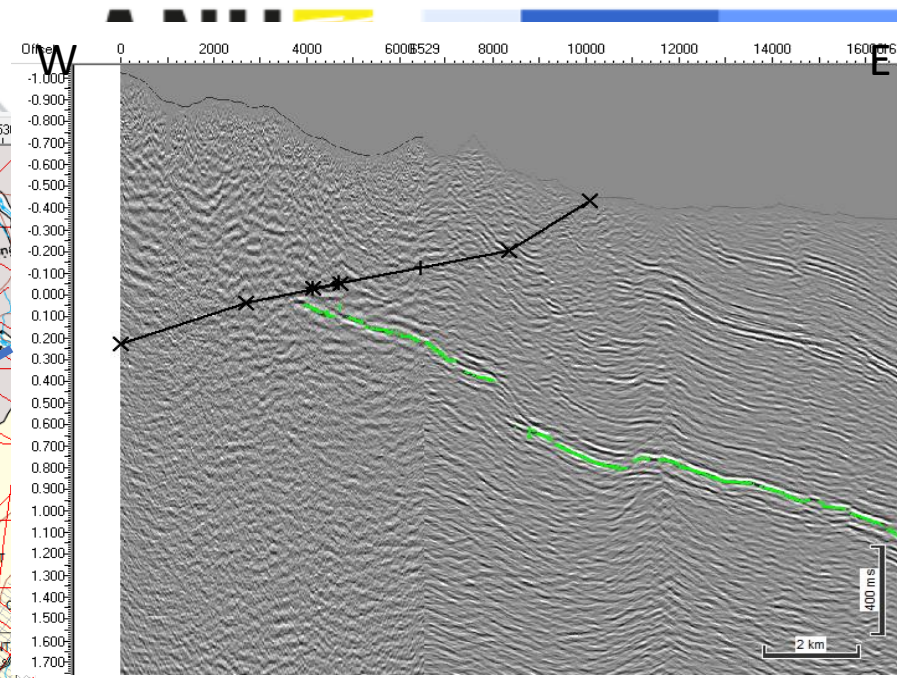
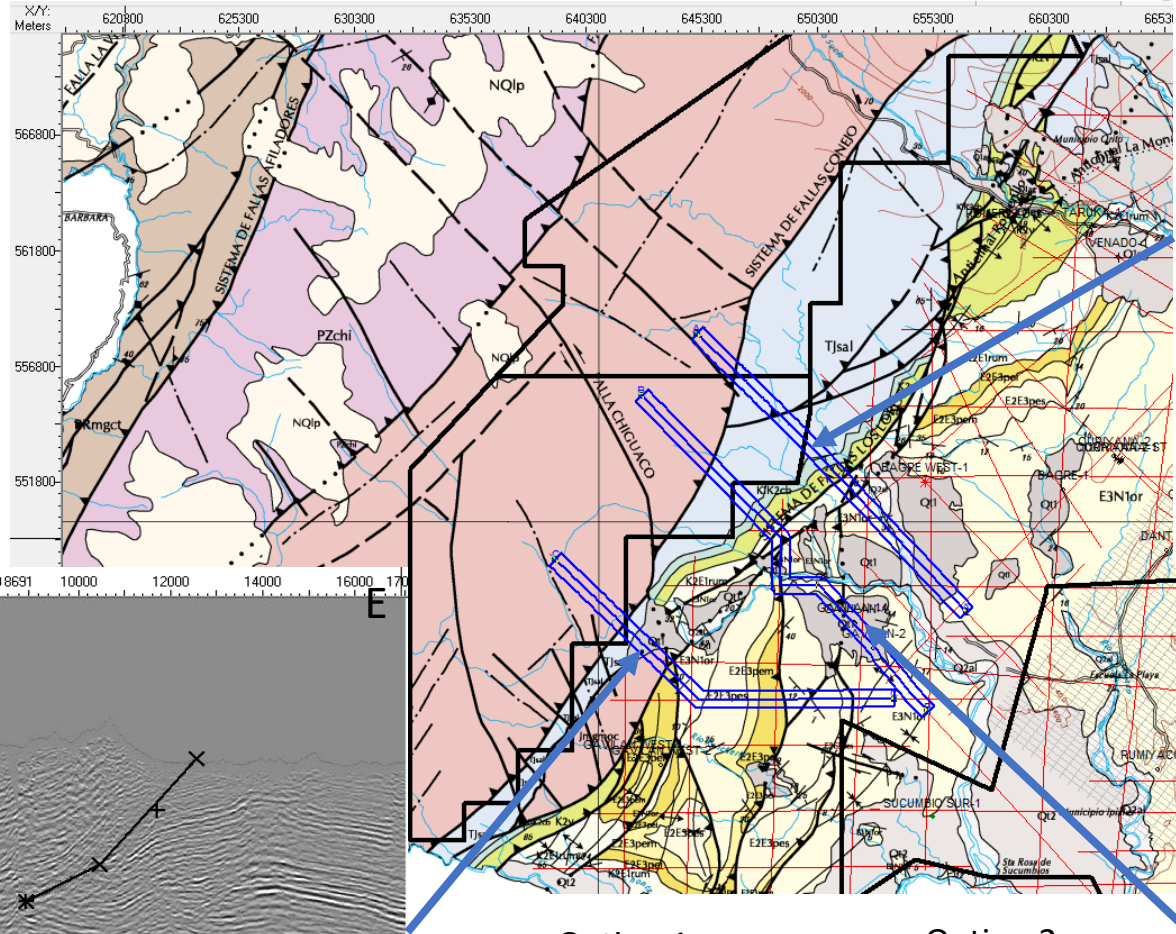


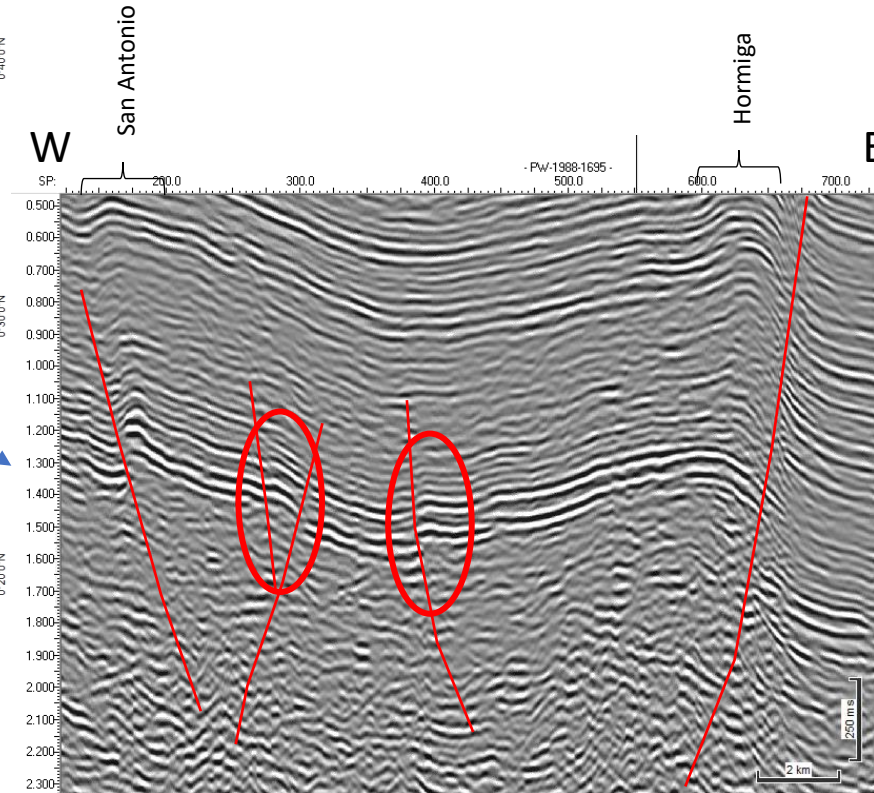
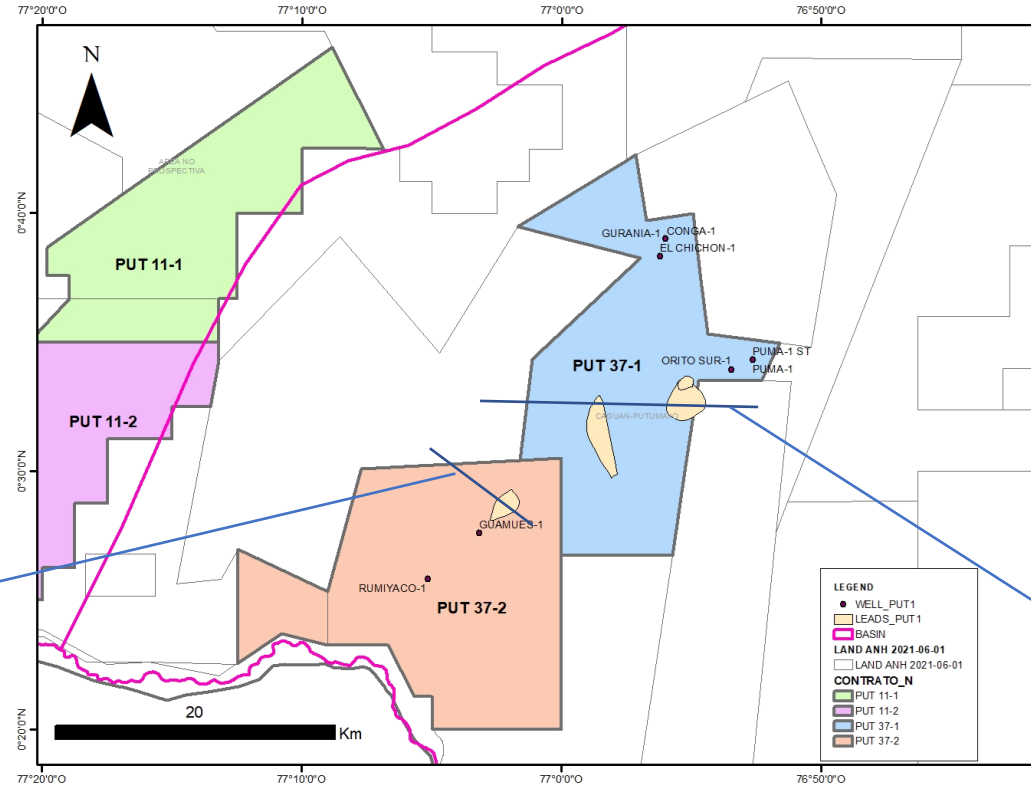
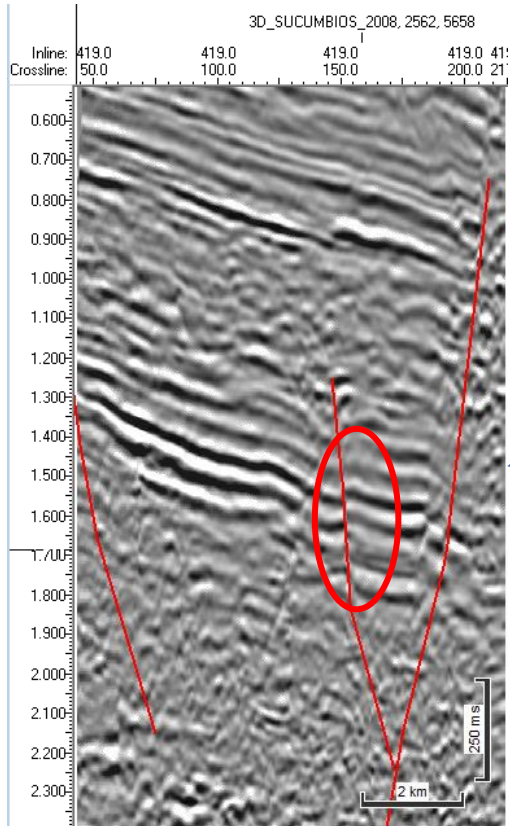
Arbitrary Seismic Section (W-E)



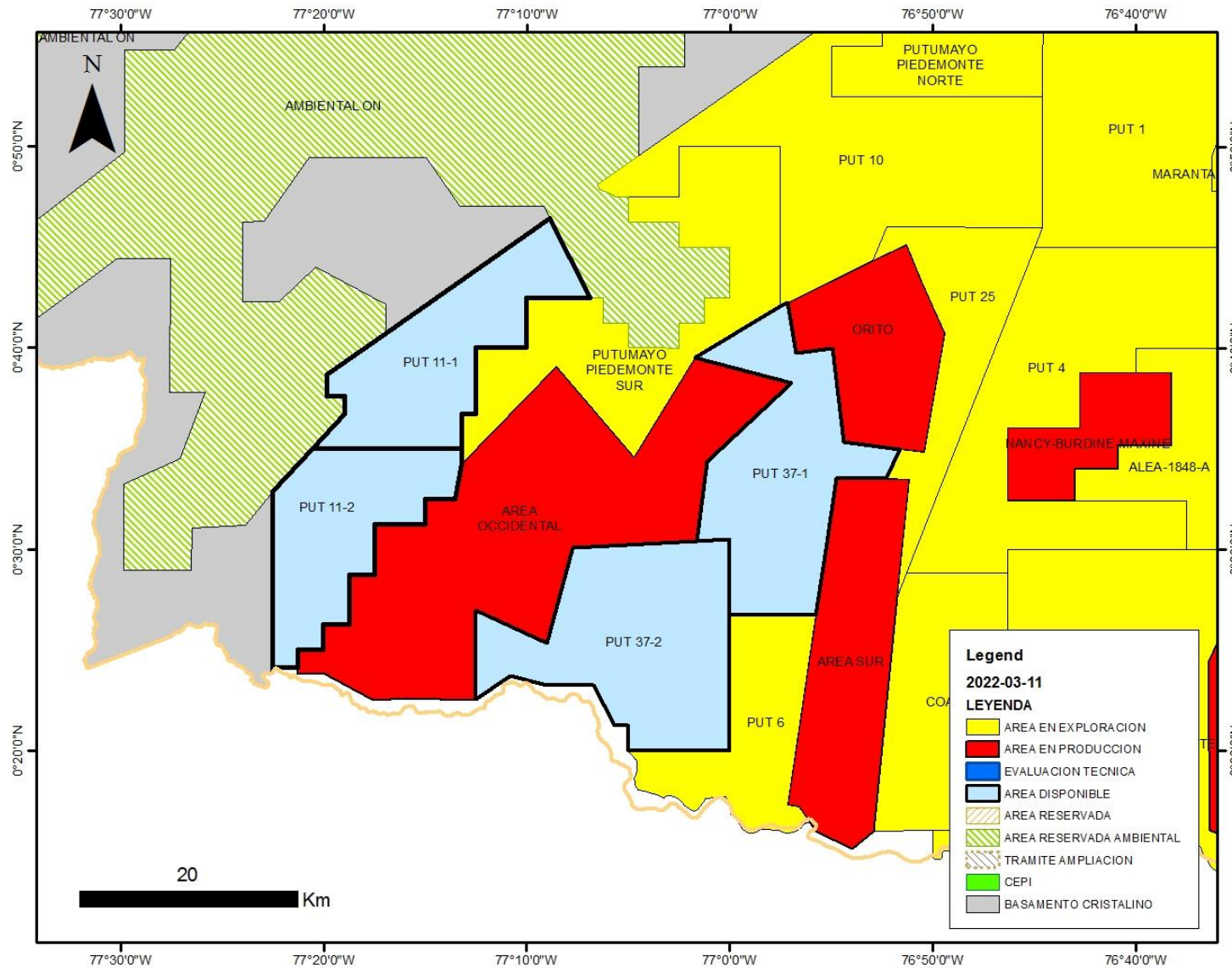
- PUT 11-1
Some reflectos probably Cretaceous below basement
- PUT 37-1
some possible structures are observed that may be of interest

PUT 11-1 & PUT 11-2 - Prospectivity





- Four blocks remain in the Southwest zone of Putumayo basin to be taken in this competitive process.
- The main reservoir in this area is the Caballos Formation, especially the lower level.
- As seen in the westernmost wells, there are manifestations of light oil and also non-combustible gas (CO₂)
- In the areas PUT 11-1 and PUT 11-2, there may be structures under the thick skin faults that bring out pre-Cretaceous rocks on the surface.
- In areas PUT 37-1 and PUT 37-2, there is the possibility of structures between horst and anticlines against reverse faults
- The Conga-1 and Puma-1st wells were hydrocarbon discoverers and would have some production potential in their vicinity.
- To illuminate the foothill area better, the acquisition of a new 2D seismic would be recommended, given that the most western drilled wells had manifestations of condensed oil, this would give the option of new possibilities in the western area.



AREA TO NOMINATE

PUT 11-1

PUT 11-2

PUT 37-1

PUT 37-2

Thanks