



# ESTRATIGRAFIA SECTOR SUR DEL CPSJ A PARTIR DE POZOS SOMEROS (NW COLOMBIA)

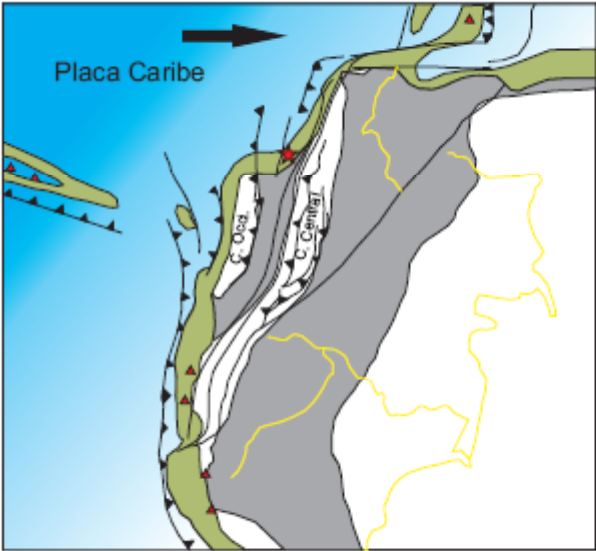
Rosero, J.S.\*; Borrero, C.; Pardo, A.; Silva, J.C.; Flores, A. ; Navarrete, R.;  
Restrepo, L.; Arroyave, C.; Gómez, C.

\* [jsrc3333@gmail.com](mailto:jsrc3333@gmail.com)

Septiembre, 2011  
Medellín

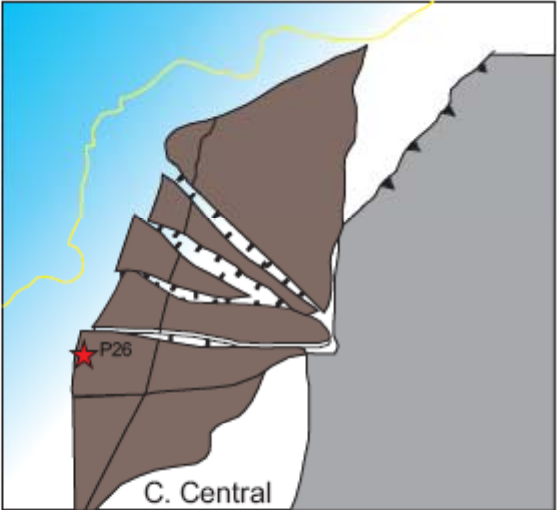
XIV Congreso Latinoamericano de Geología  
XIII Congreso Colombiano de Geología

# PALEOGEOGRAFIA-OLIGOCENO

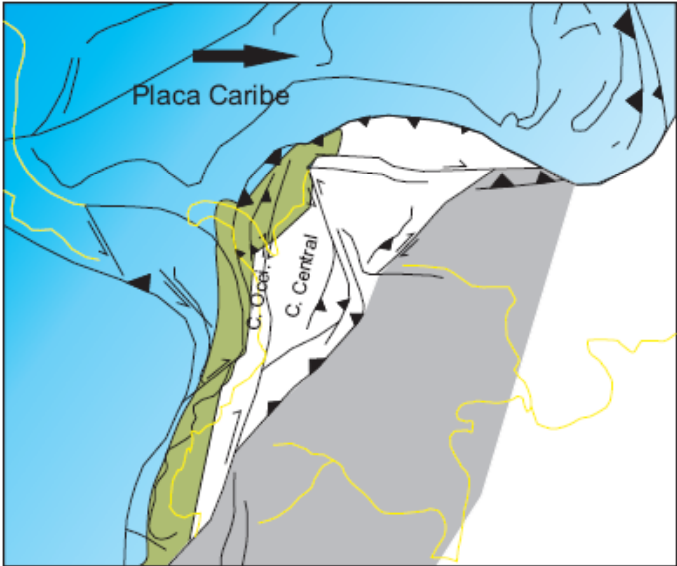


Modificado de Moreno y Pardo, 2003

Modificado de Montes et al., 2010.

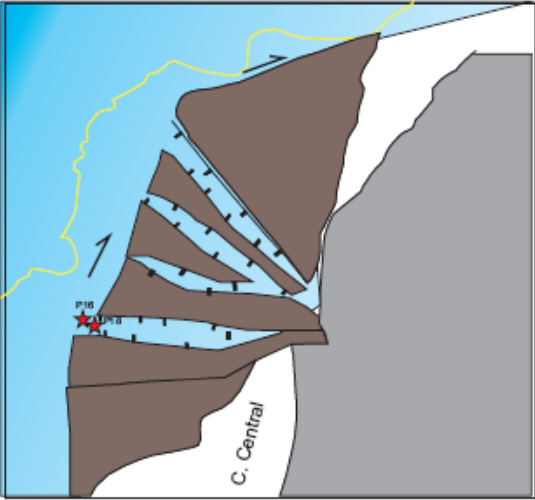


# PALEOGEOGRAFIA-MIOCENO



Modificado de Pindell y Kennan., 2009.

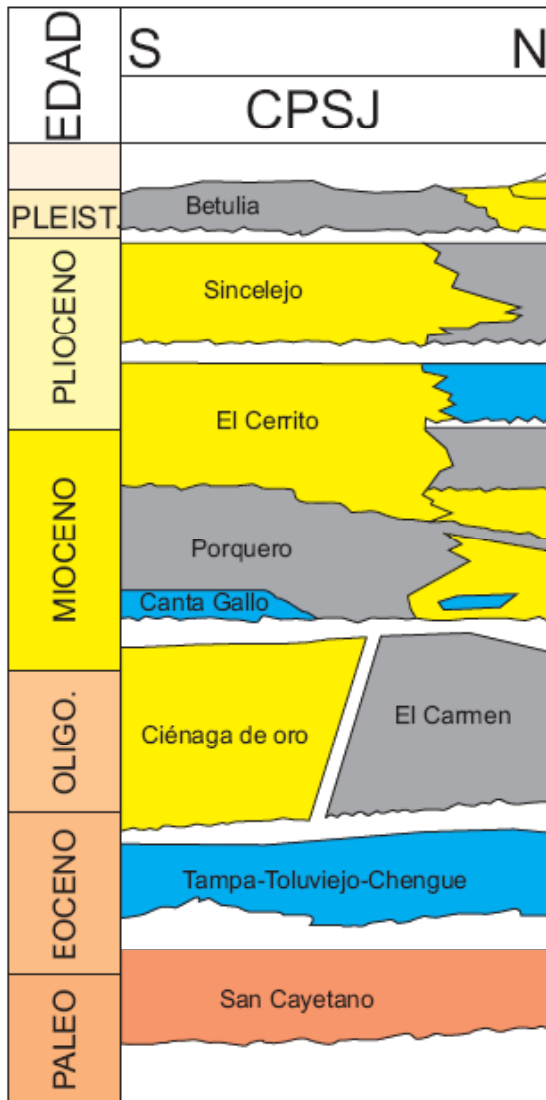
Modificado de Montes et al., 2010.



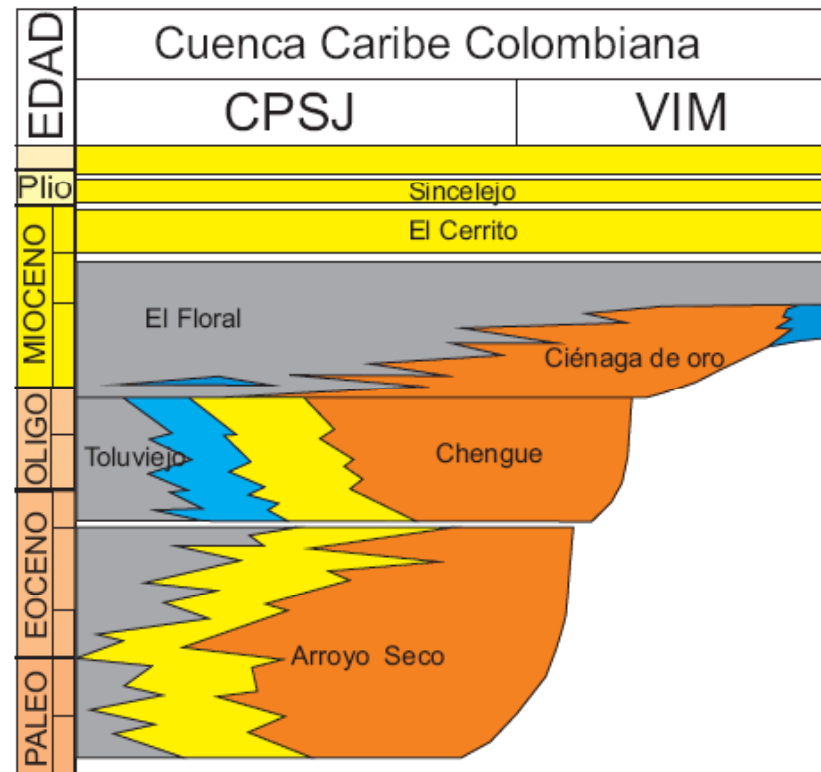
# CARTA ESTRATIGRAFICA



Modificado de Gúzman, 2007.



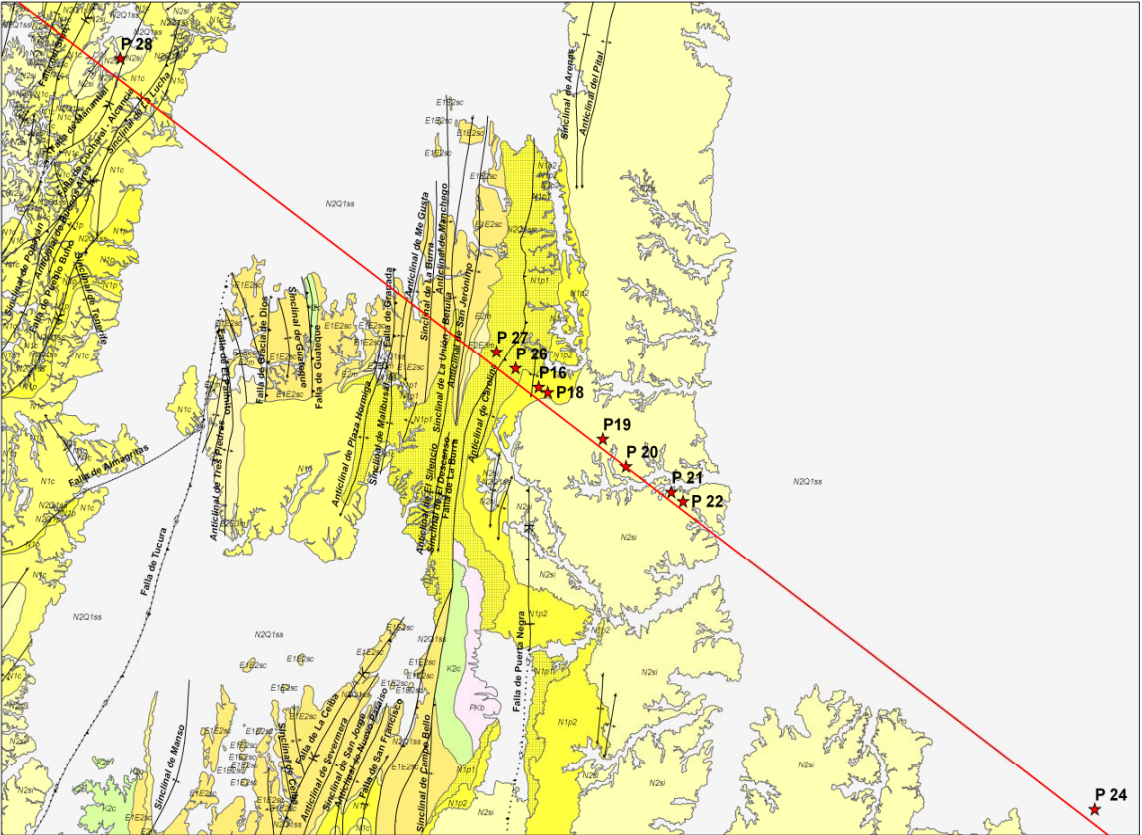
Modificado de Universidad de Caldas, 2009.



---

# ESTRATIGRAFIA

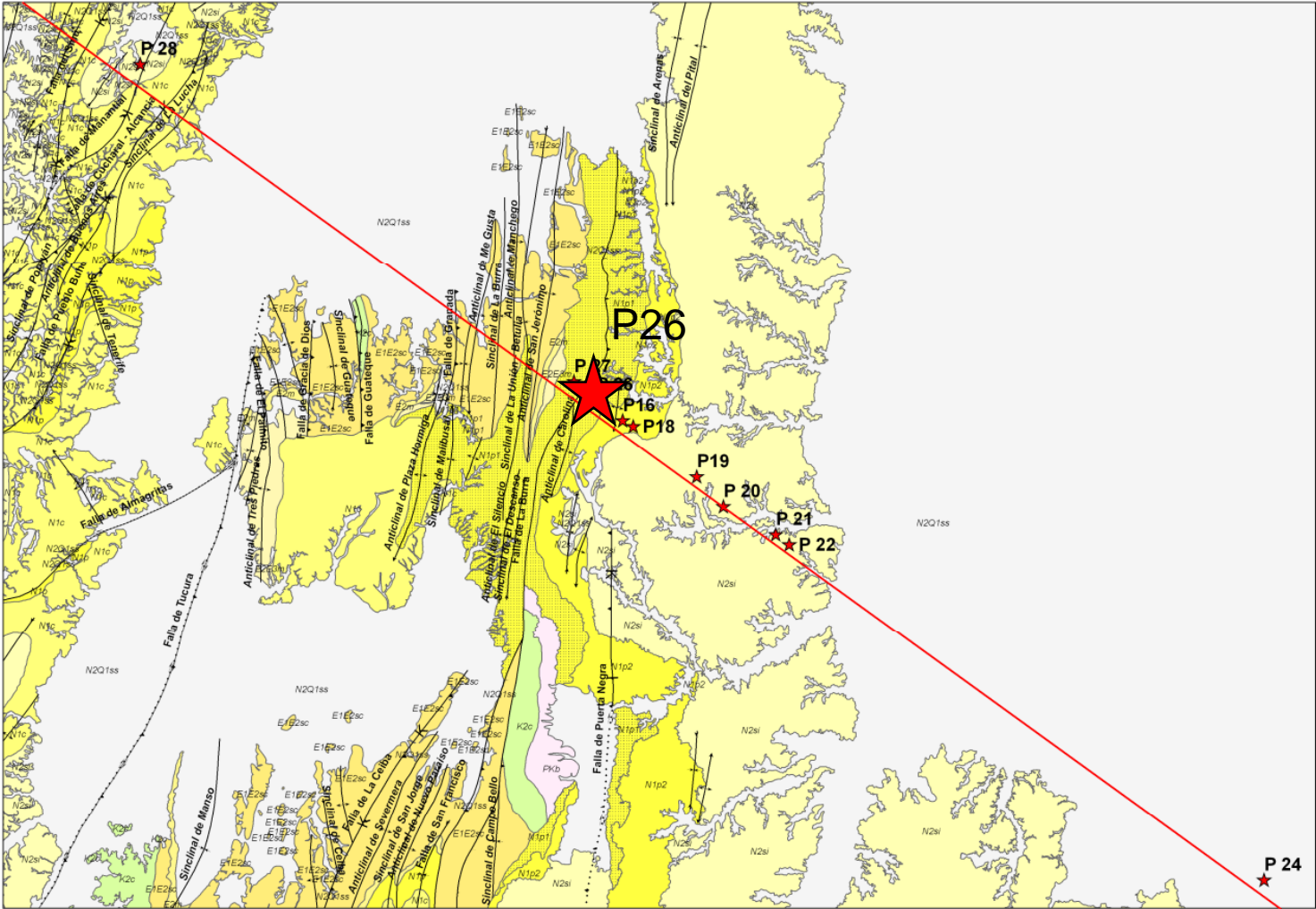
# LOCALIZACION



# LINEA SISMICA REGIONAL TRANSANDINA ANH-TR-2007

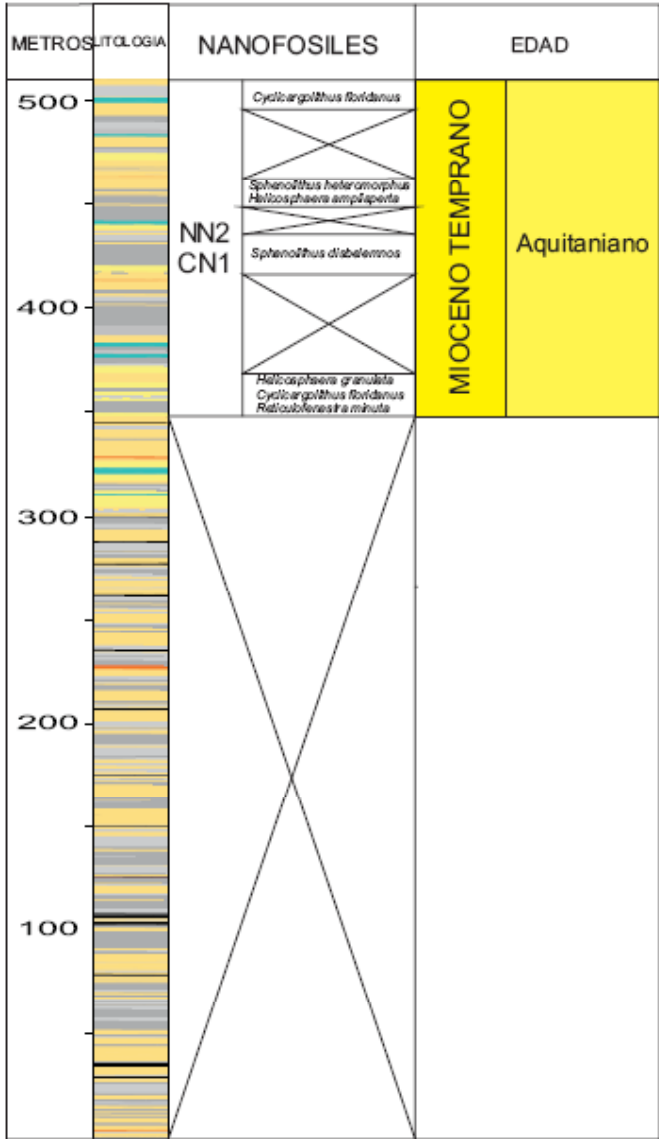
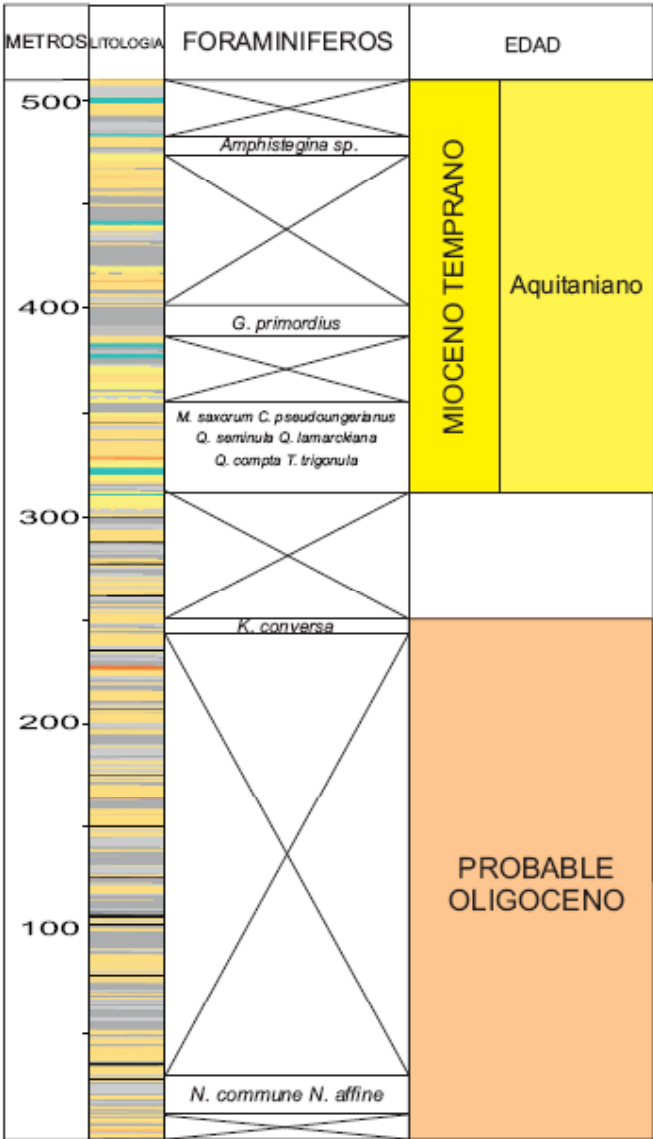


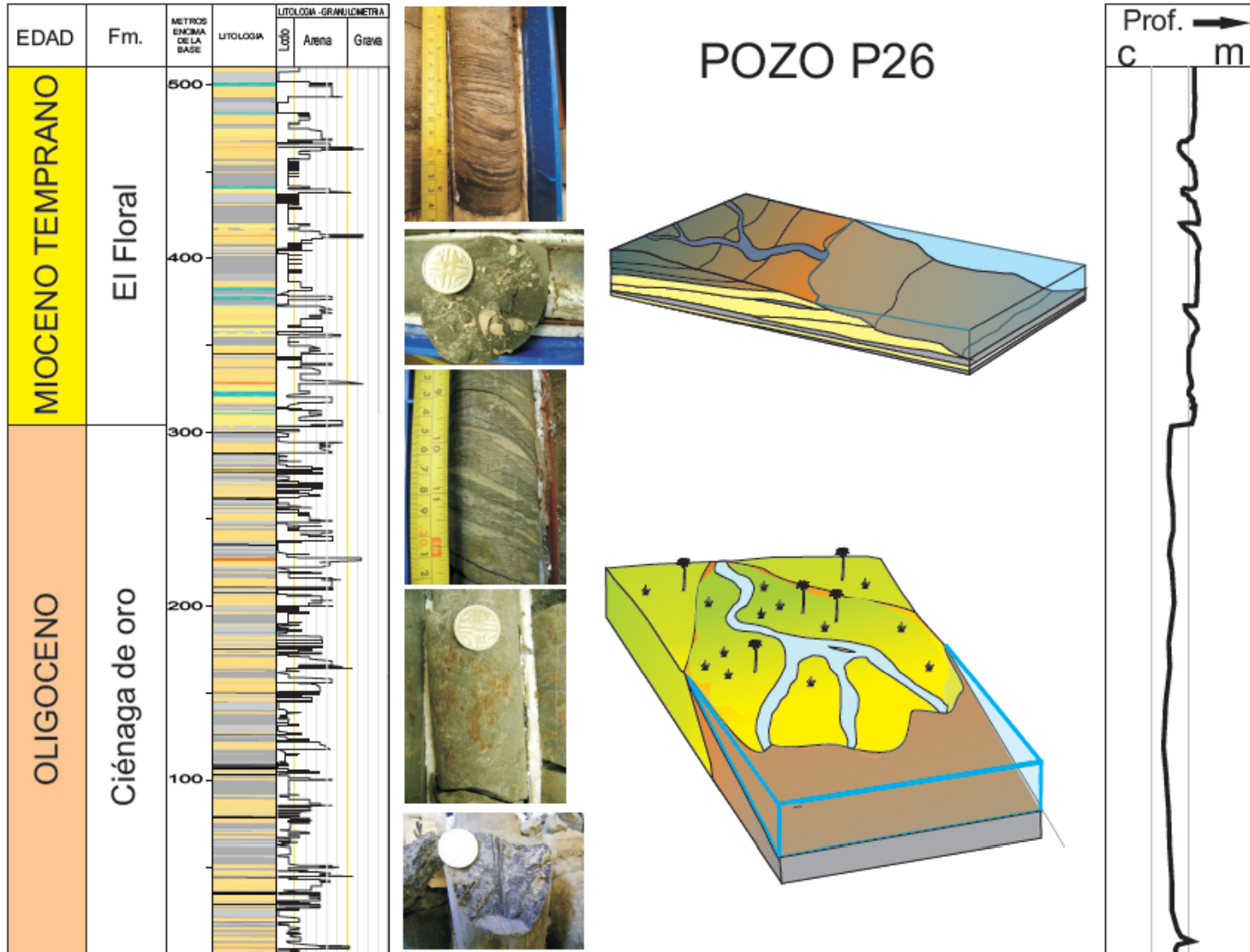
# LOCALIZACION P26



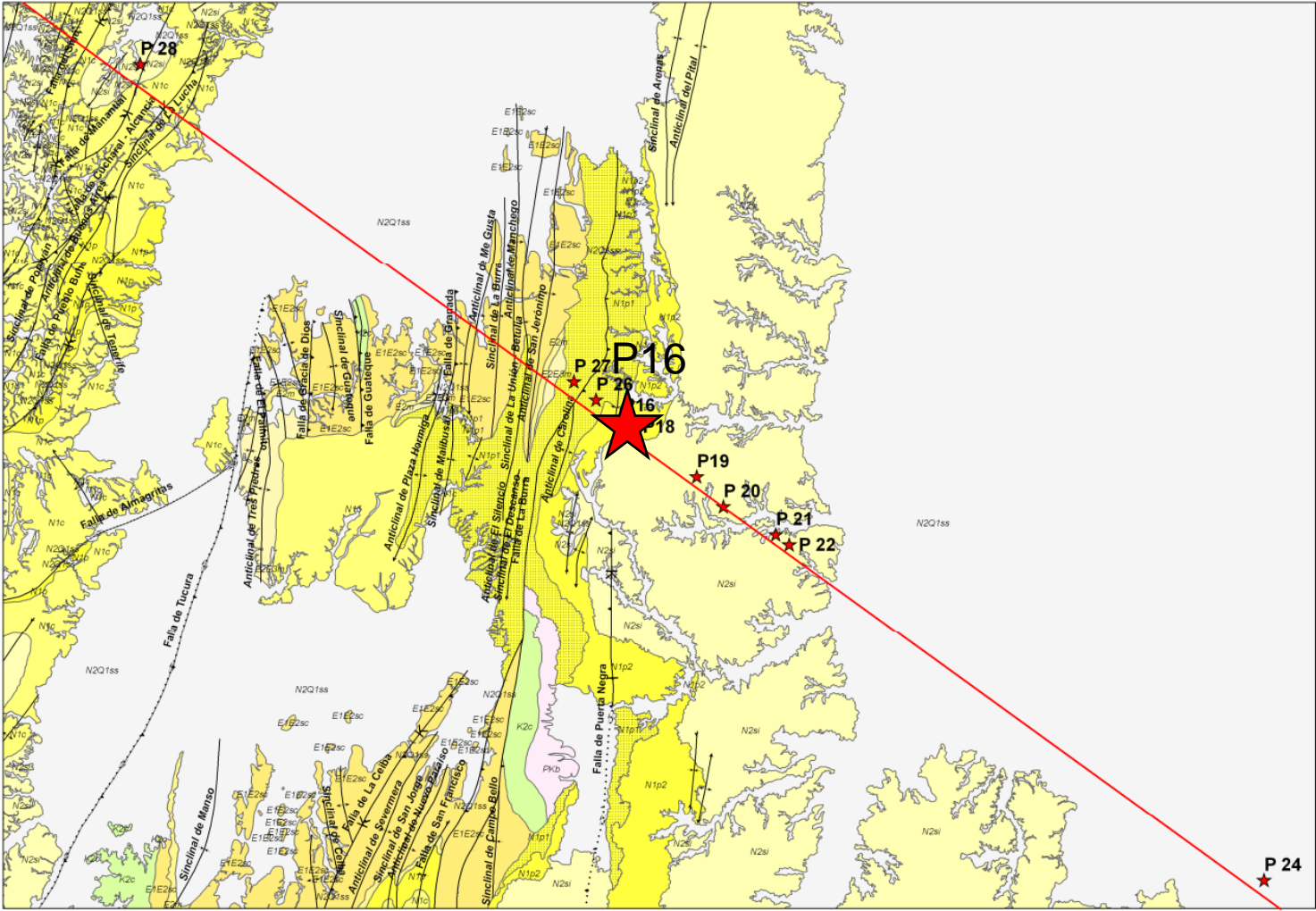


# BIOESTRATIGRAFIA P26

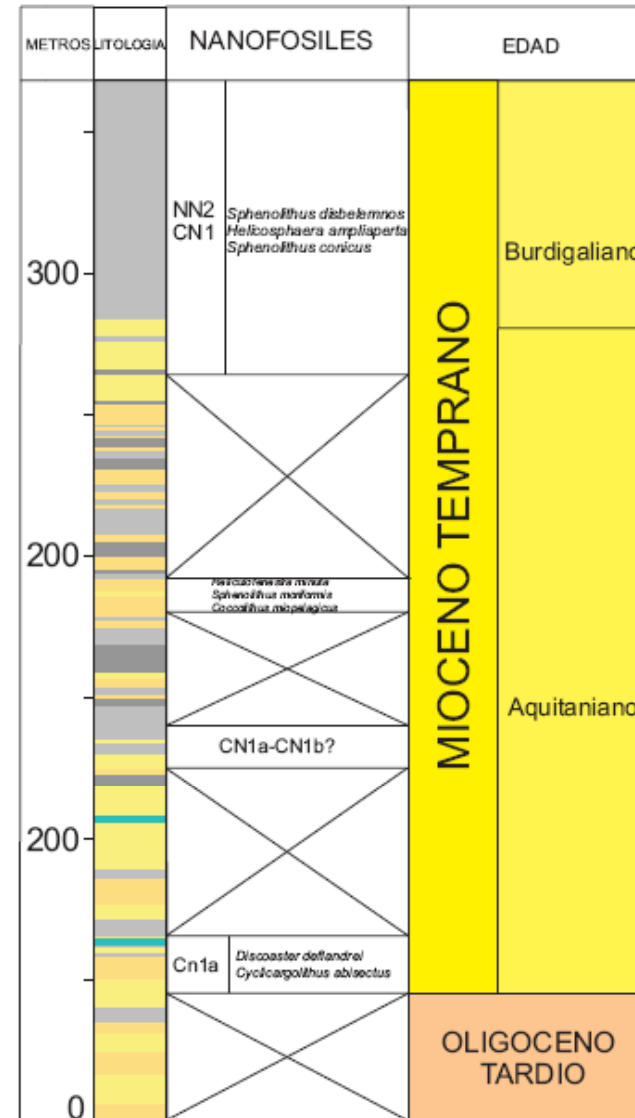
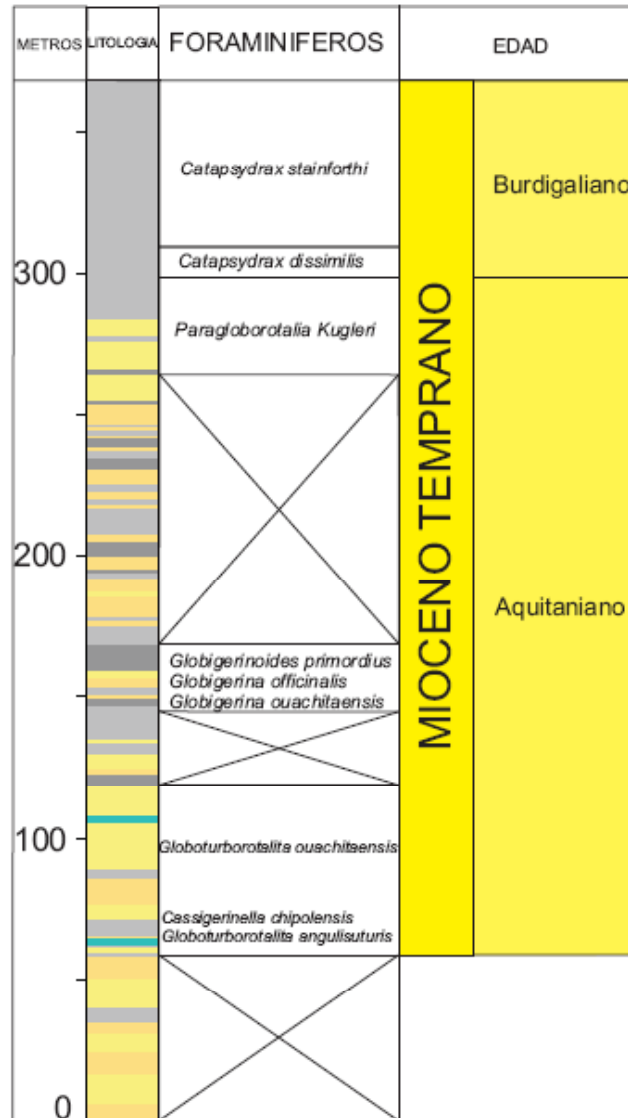




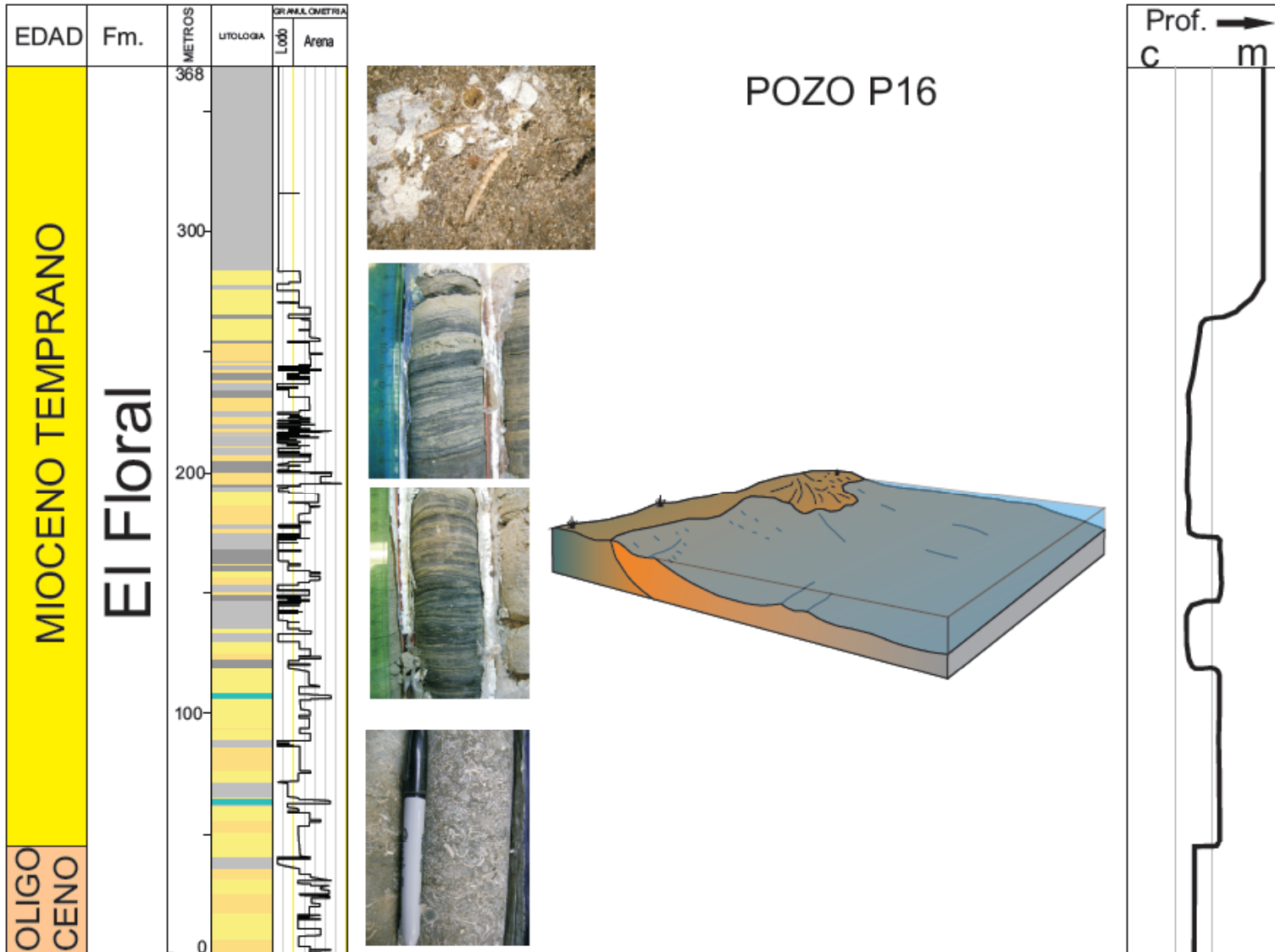
# LOCALIZACION P16



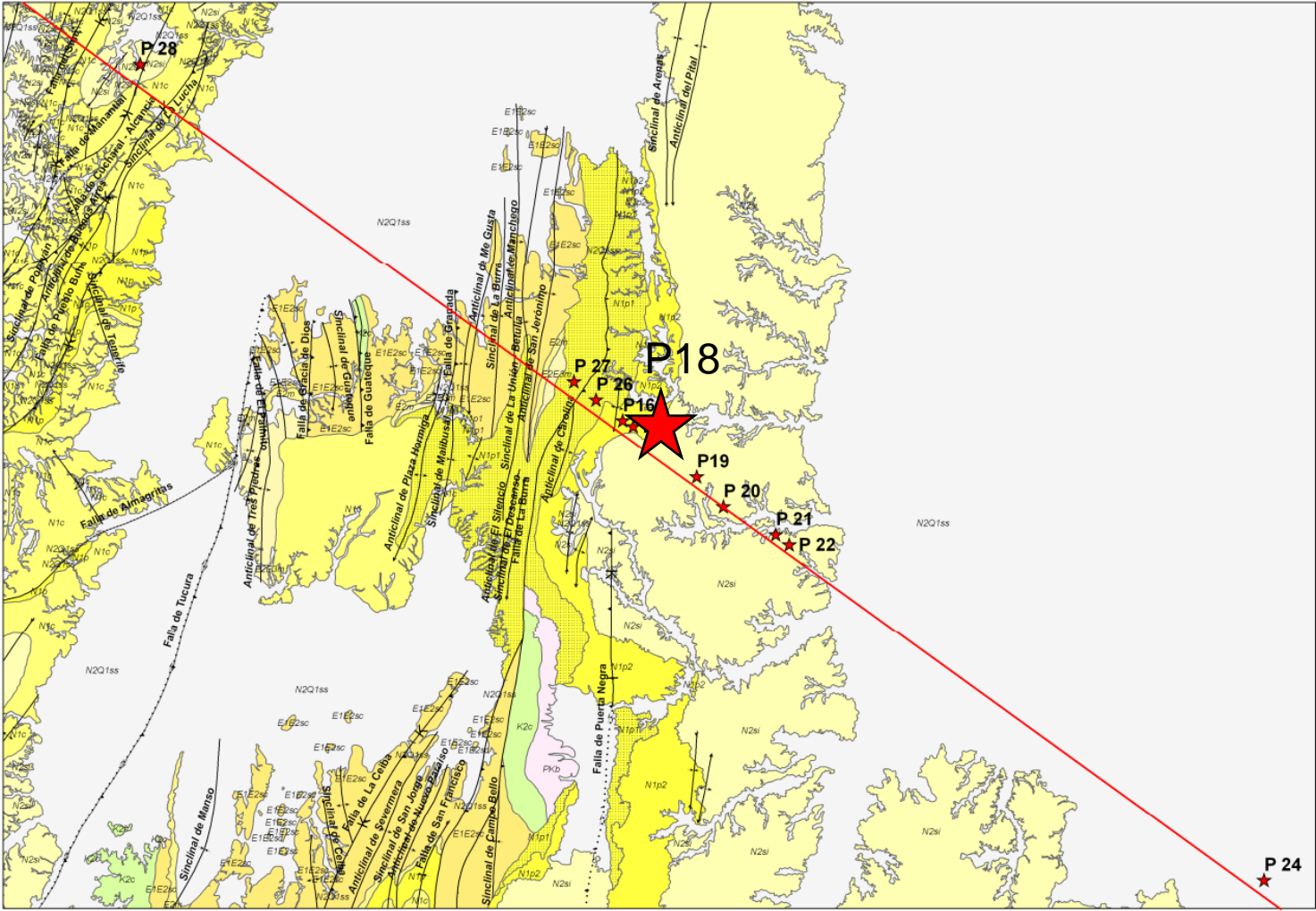
# BIOESTRATIGRAFIA P16



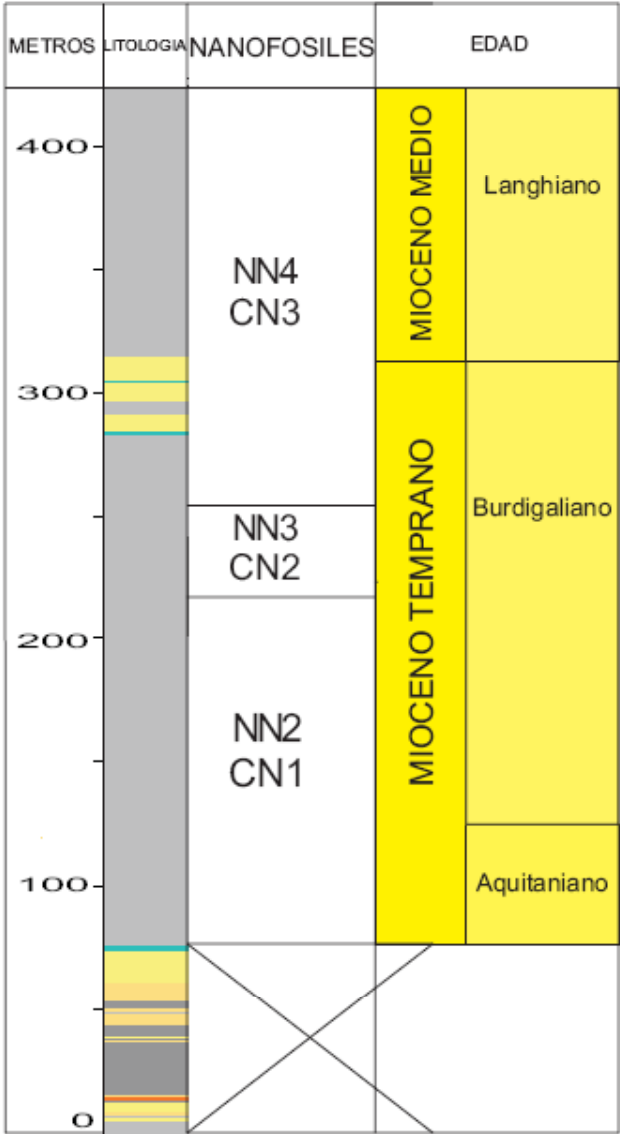
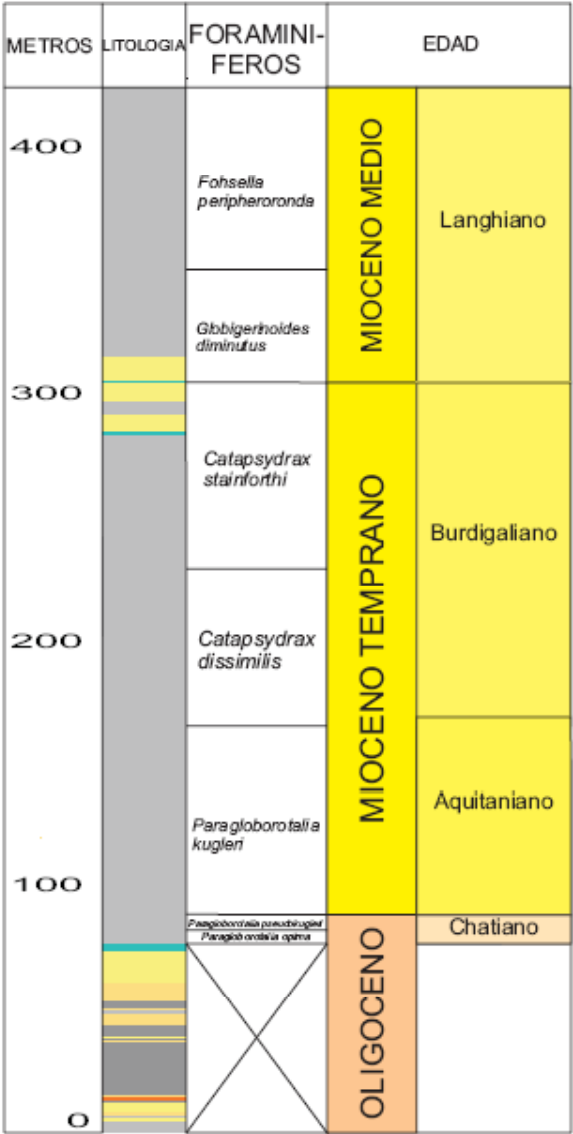
# P16



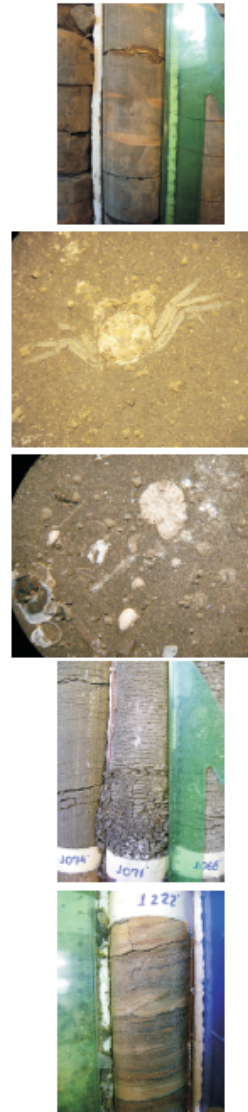
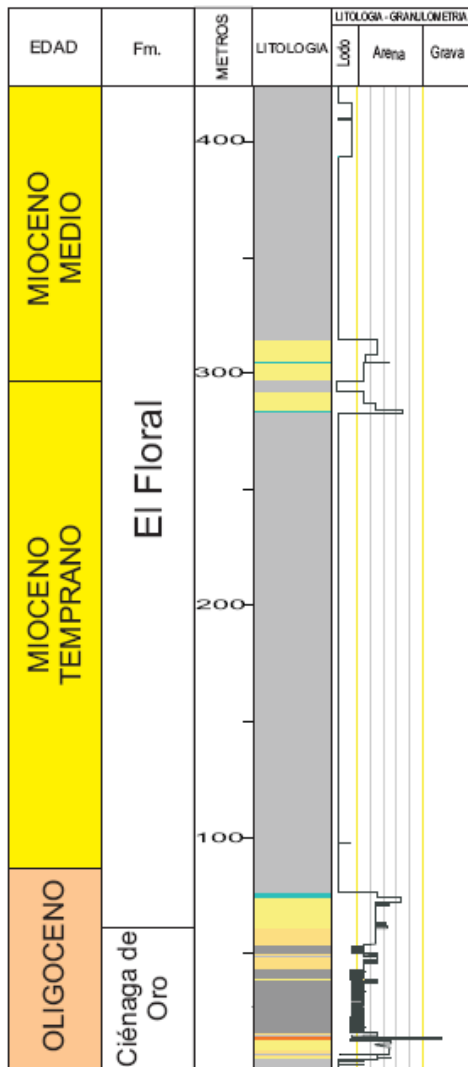
# LOCALIZACION P18



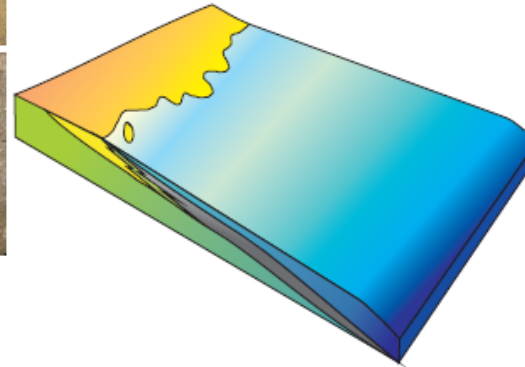
# BIOESTRATIGRAFIA P18



# P18



## POZO P18





# CONCLUSIONES



- Se reconocen dos sucesiones sedimentarias:
- Oligoceno Temprano?-Tardío- Ambientes transicionales con incursiones marinas.
- Oligoceno Tardío-Mioceno Medio-Ambientes marinos.

# GRACIAS



INSTITUTO DE INVESTIGACIONES EN ESTRATIGRAFÍA

