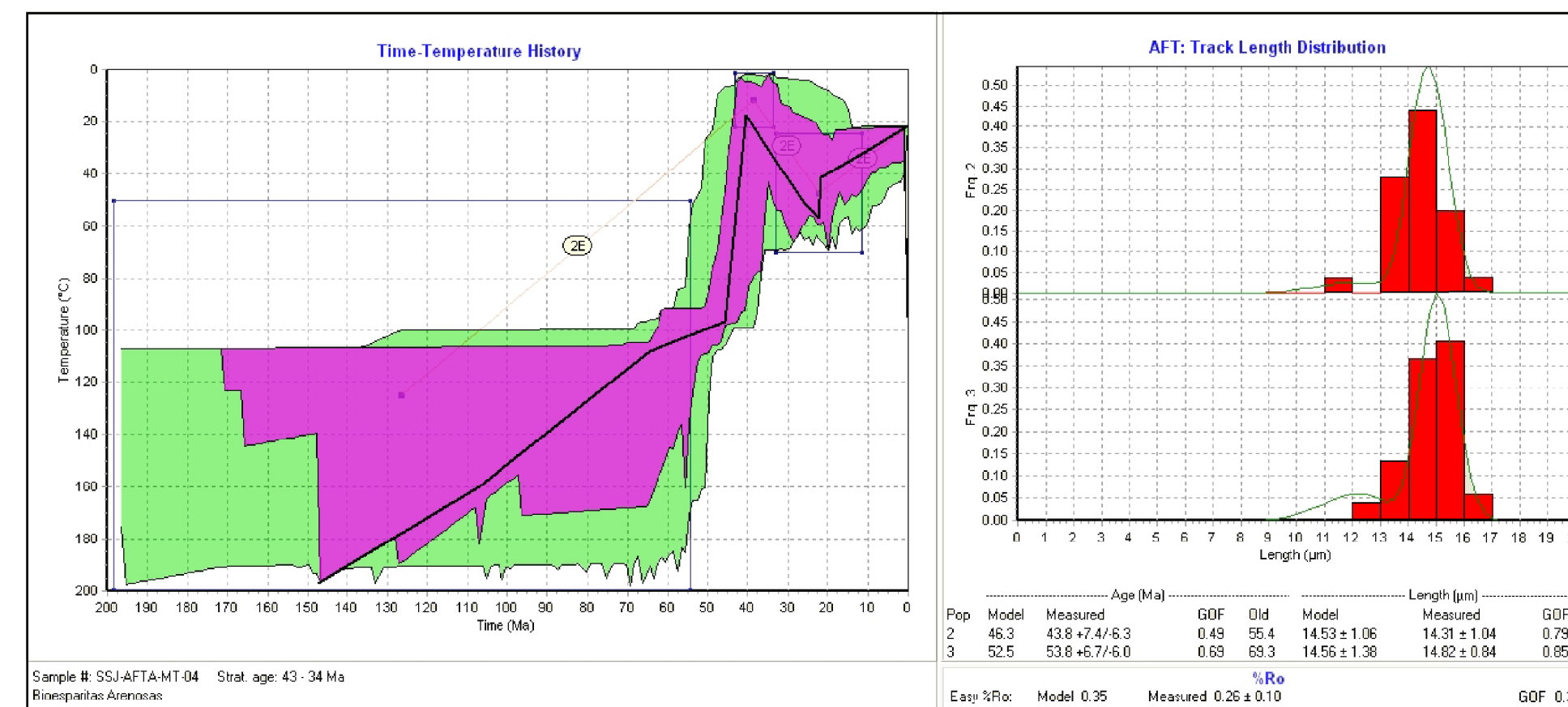
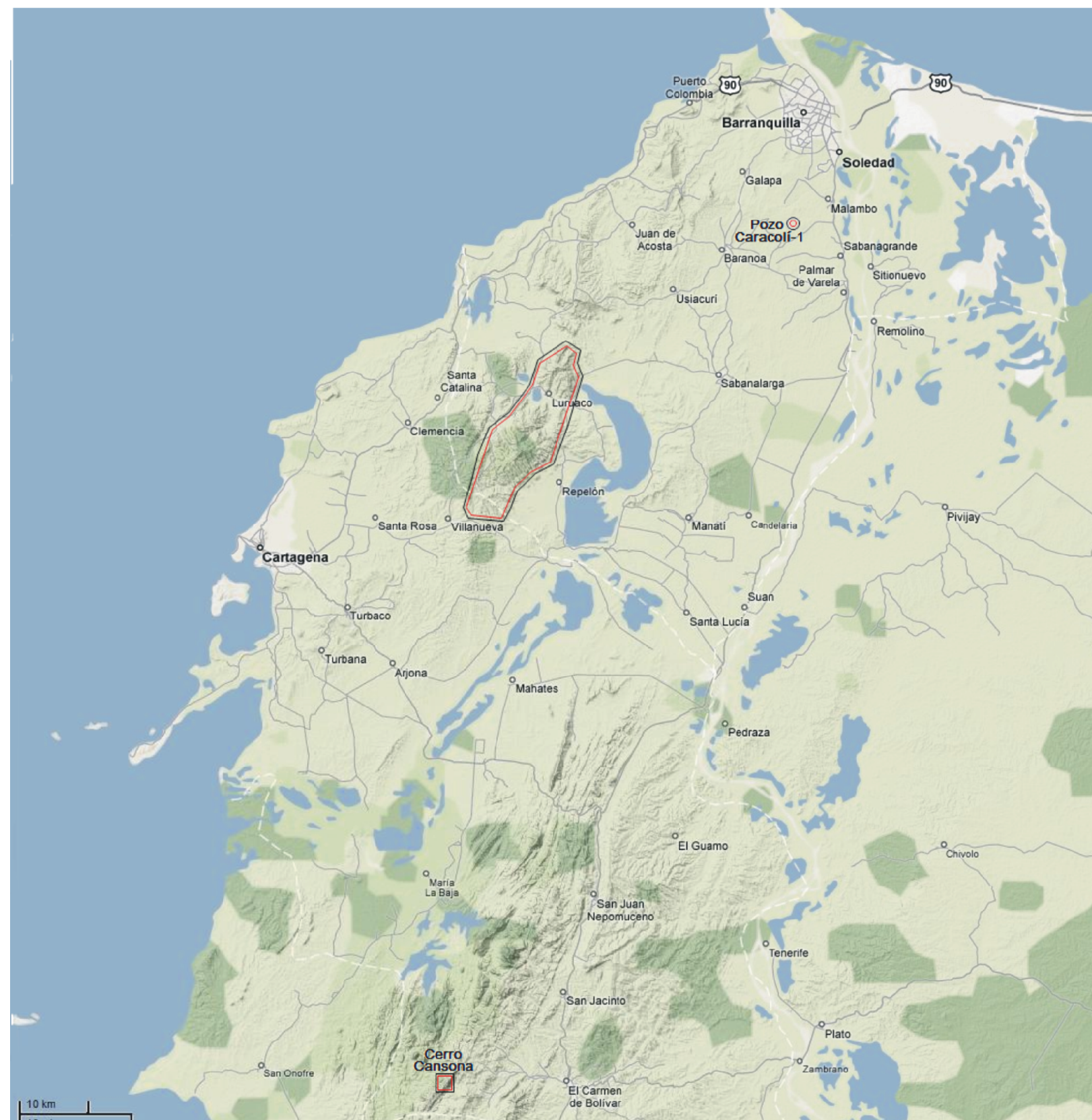


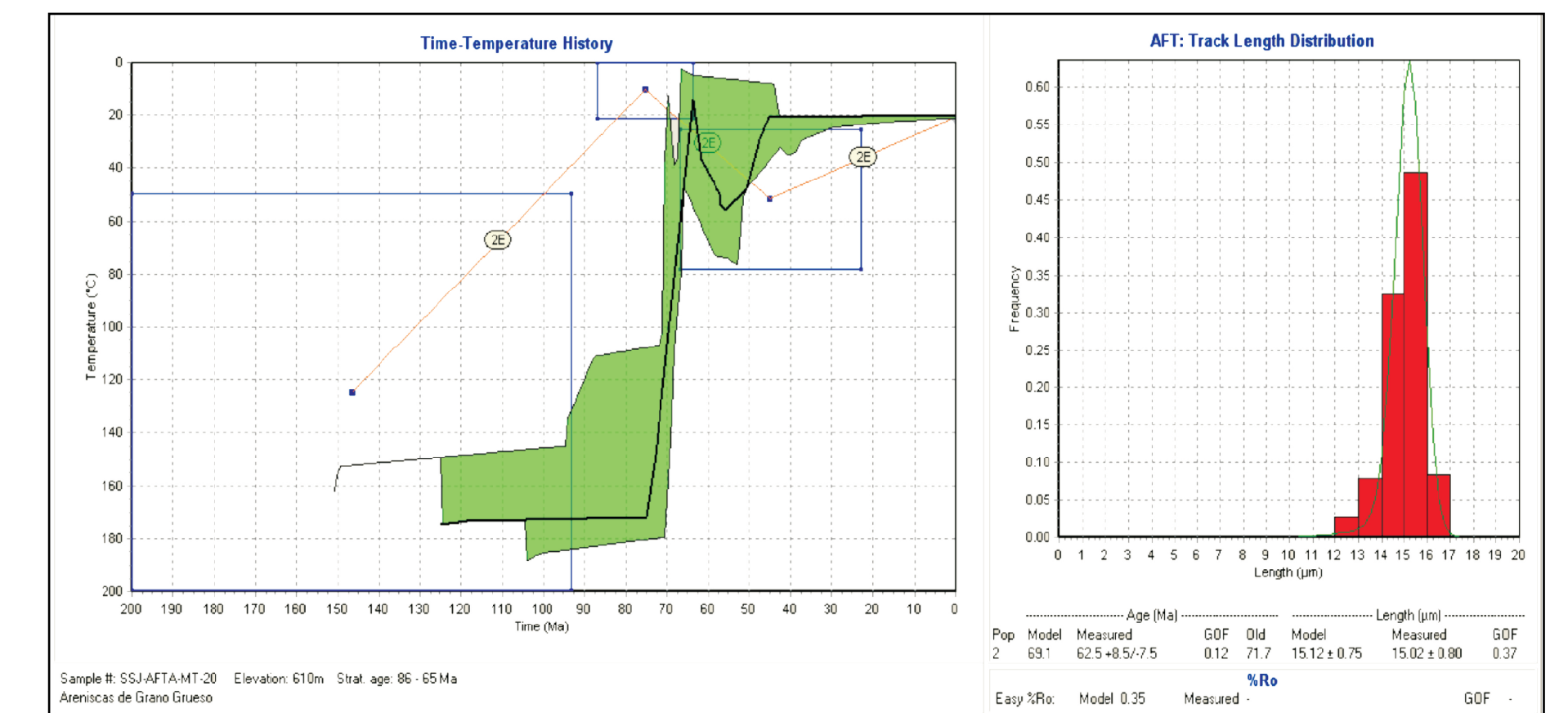
Sector Luruaco - Cerro Cansona Cuenca Sinú - San Jacinto



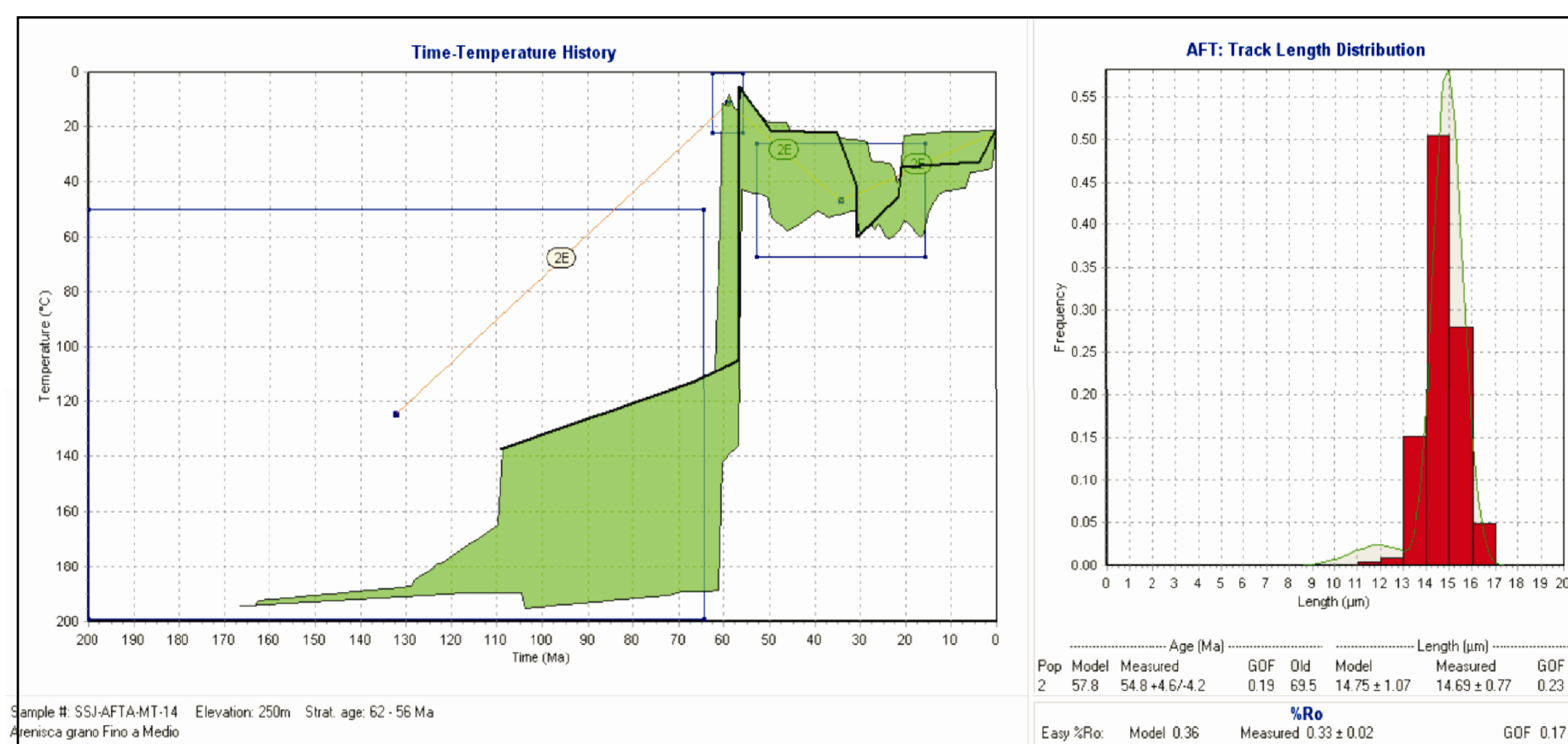
LOCALIZACIÓN



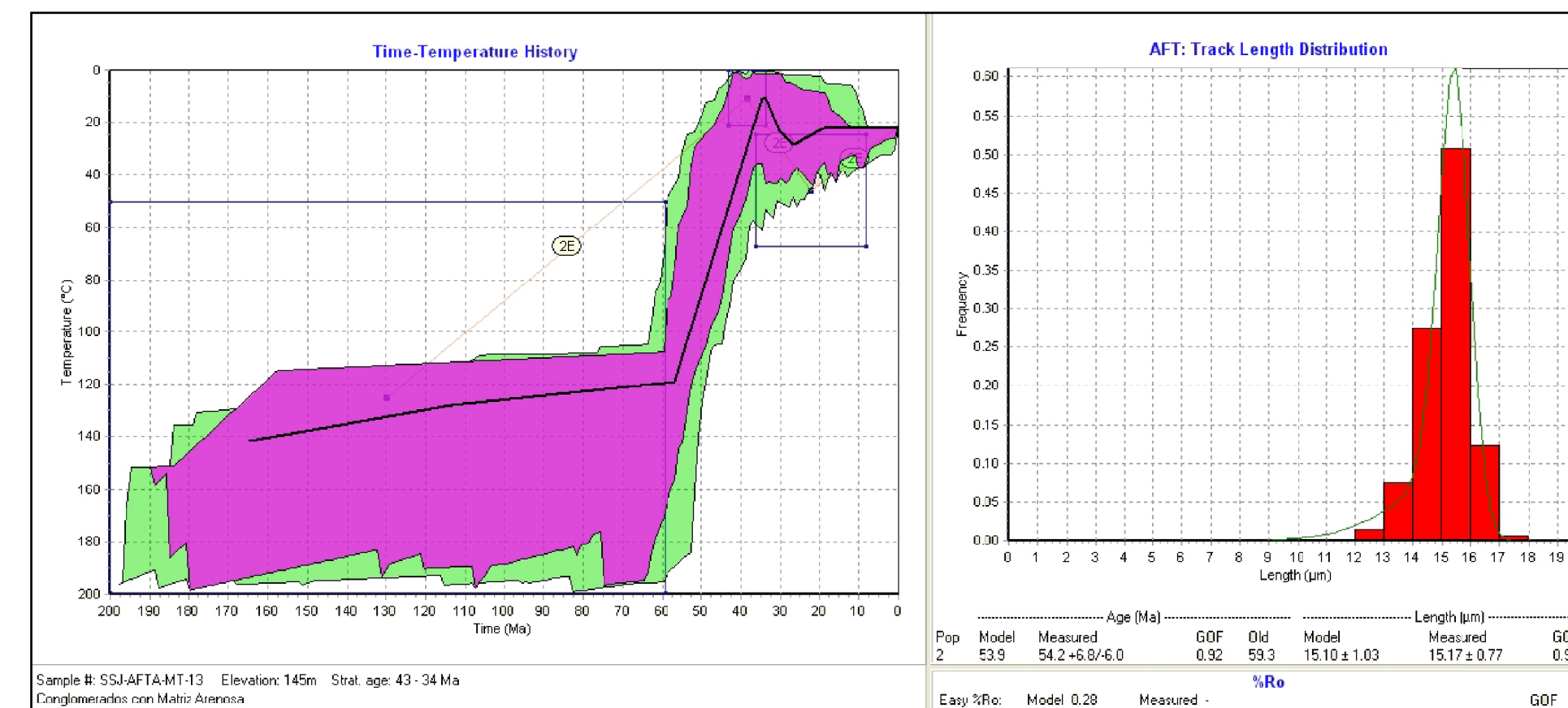
Formación Arroyo de Piedra



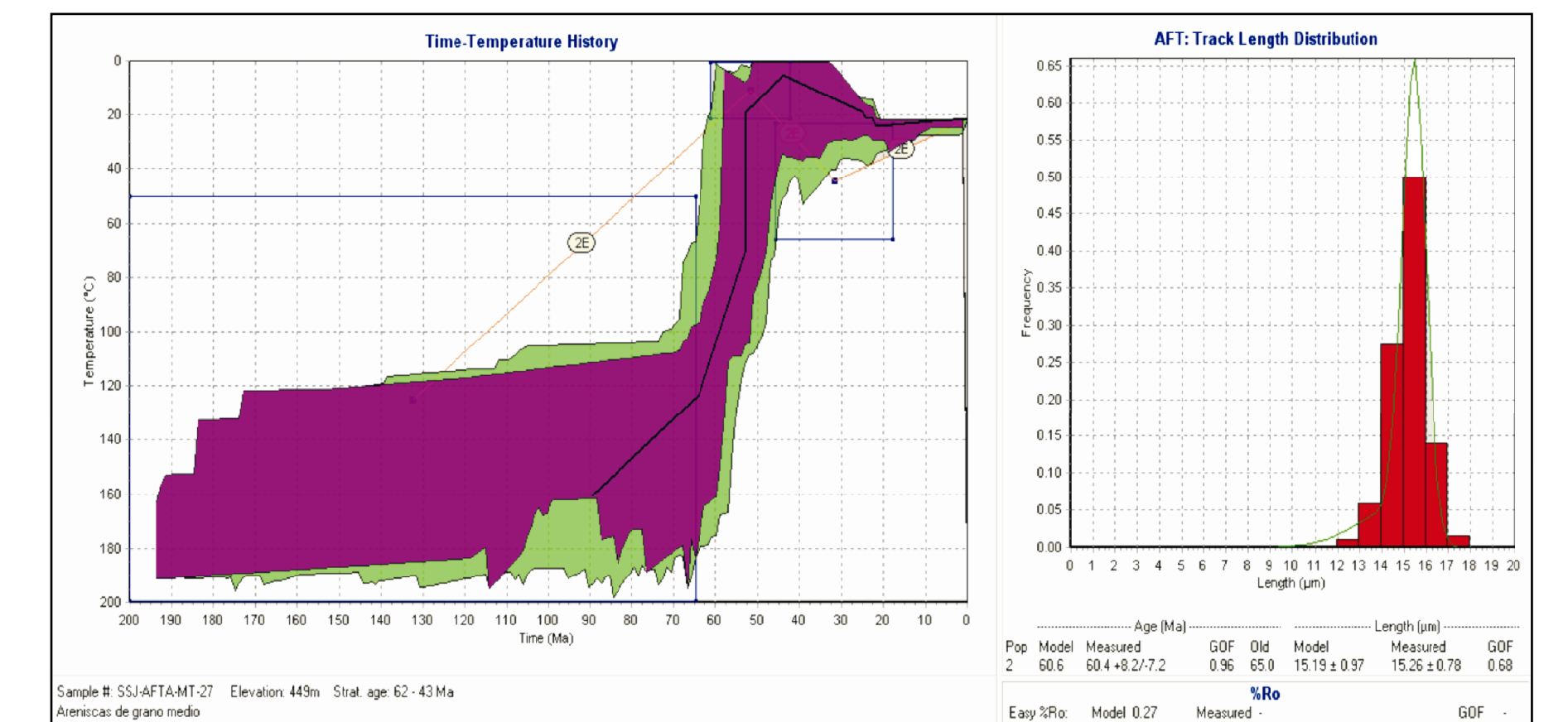
Formación Cansona



Formación Luruaco



Formación Pendales



Formación San Cayetano



Responsable Información Técnica
Universidad Nacional de Colombia



Calle 99 # 9a -54 piso 14
PBX: (57+1) 5931717
Bogotá - Colombia