



AREAS ADVERTISEMENT 2022

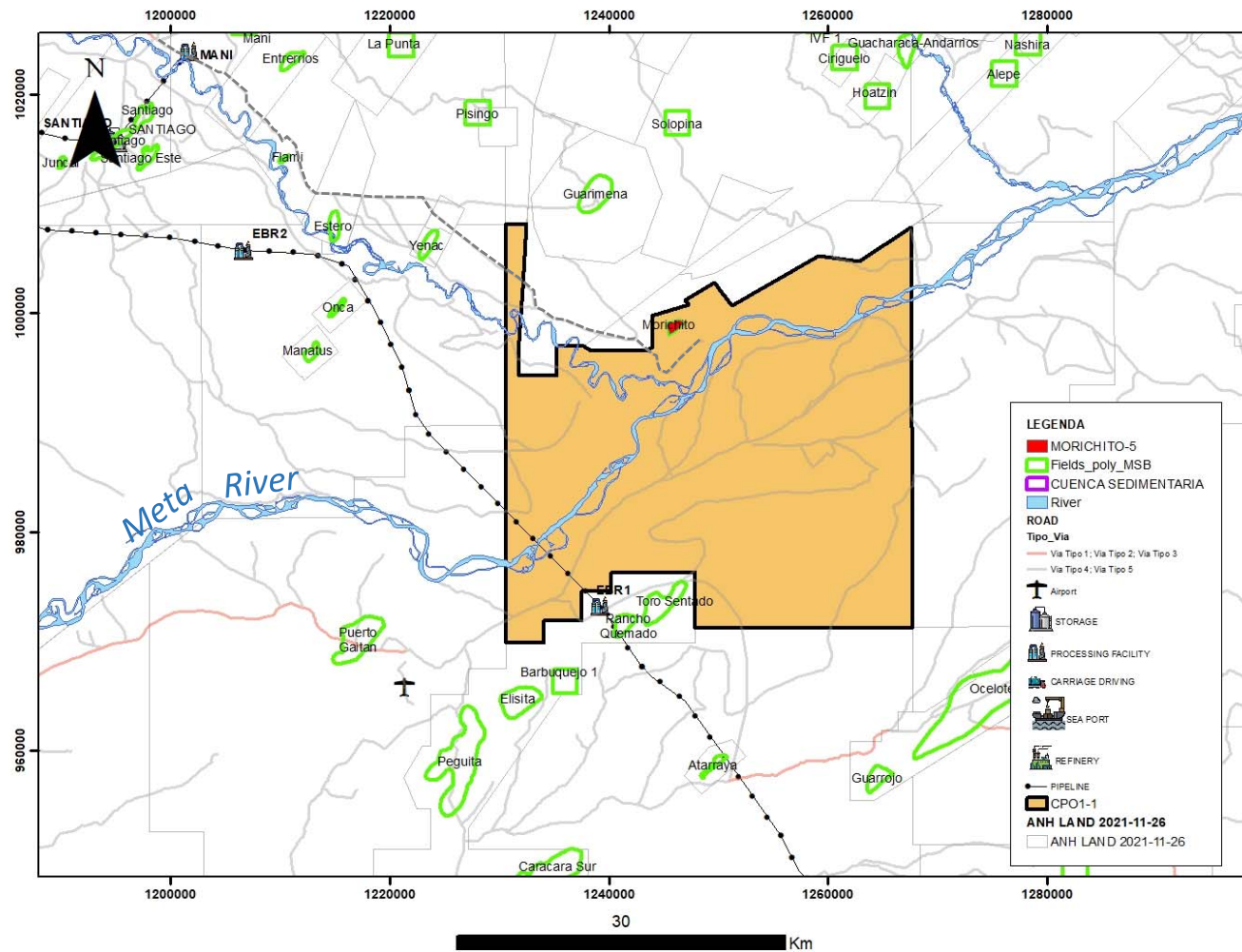
**AREA WITH PRODUCTION RETURNED TO THE ANH
MORICHITO FIELD - LLANOS BASIN**

February 25TH 2022

Content

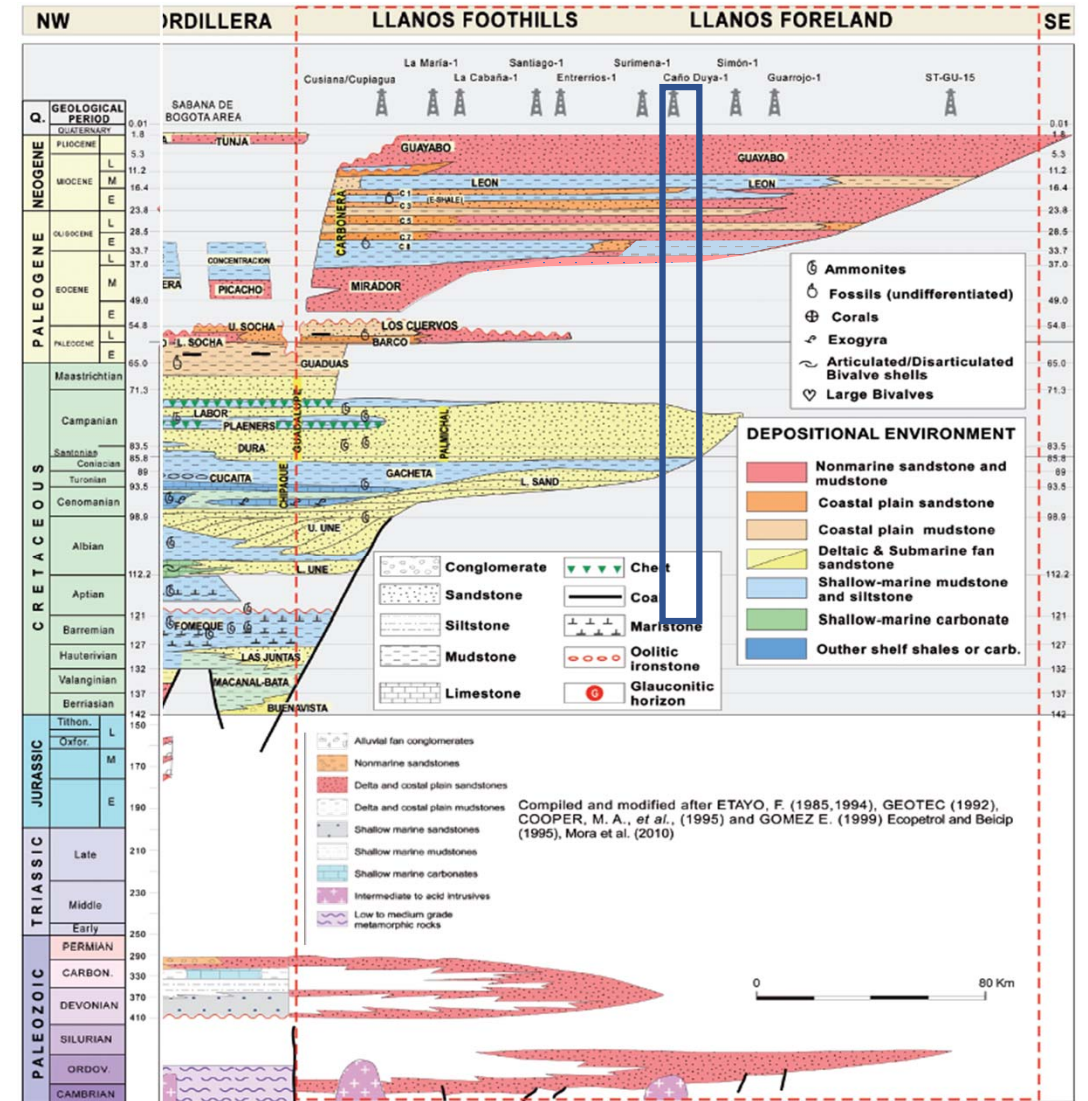
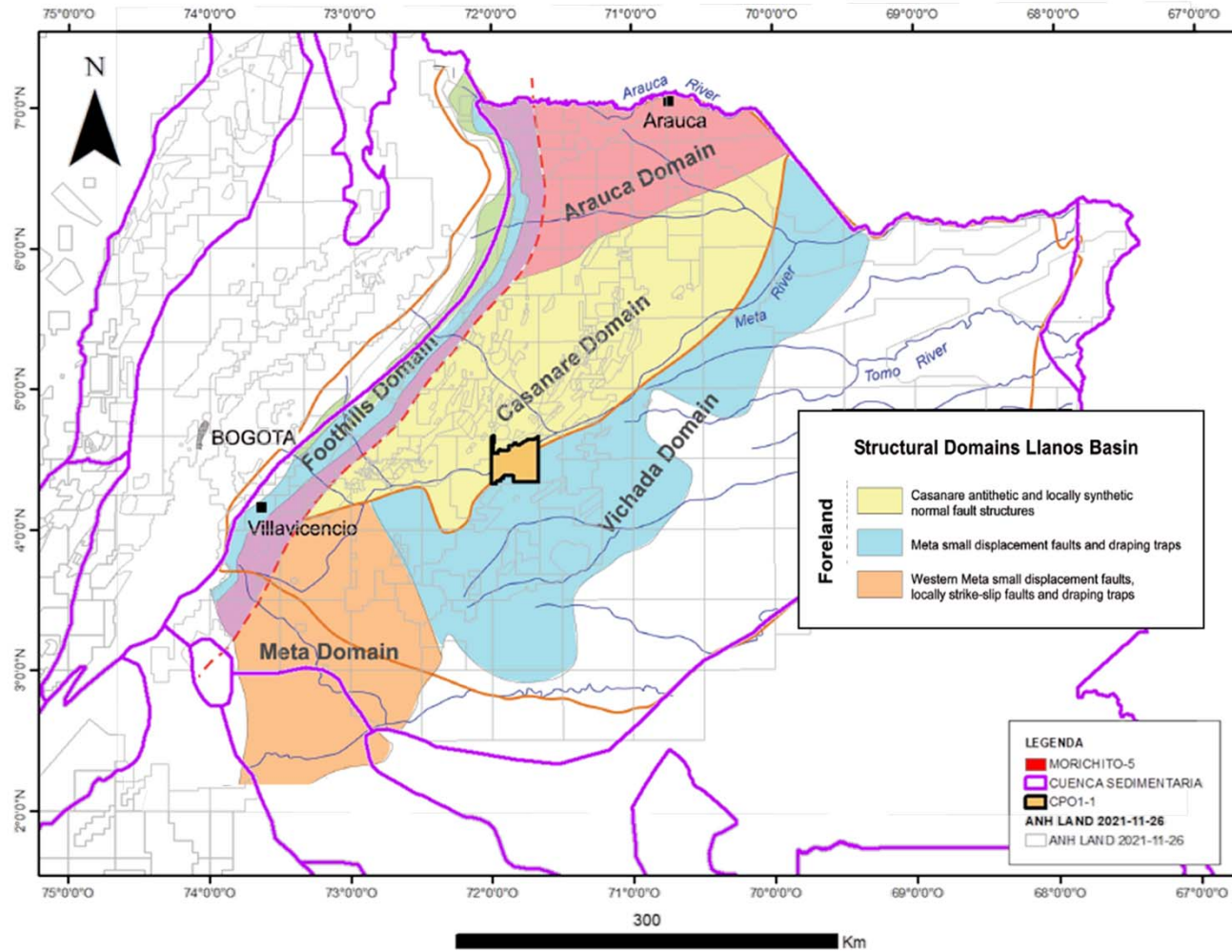
- Location
- Infrastructure
- Database – Available Information
- Morichito Field
 - Generalities
 - Production
 - Well Correlation
 - Structural Maps
 - Volumetrics
- CPO 1-1 Prospectivity
- Conclusions and Recomendations

Infrastructure



- Morichito field is connected by unpaved road with Mani town (61 Km)
- In the southern part of the area crosses the ODL pipeline. (Oleoducto de los Llanos Orientales)
- EBR2 Station at 38Km lineal
- EBR1 Station at 26Km lineal

Geological Framework



Database – Available Information

Wells

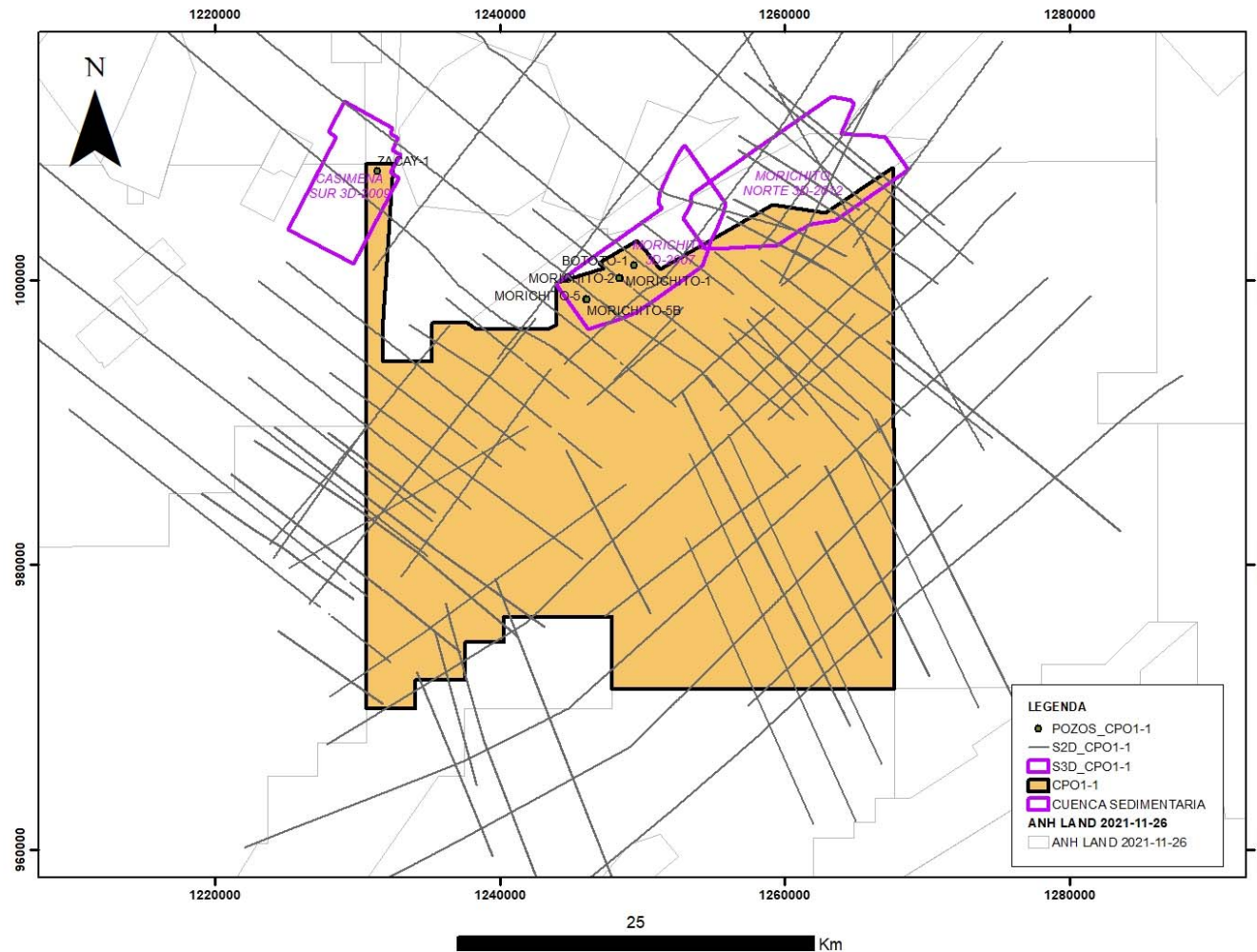
WELL_NAME	UWI	RTE	GLE	TD	TVD	WELL SPUD	WELL COMPLETION
MORICHITO-1	MORT0001	464	450	6450	6450	07/02/1990	26/02/1990
MORICHITO-2	MORT0002	470	452	6800	6800	20/02/2006	19/03/2006
MORICHITO-5	MORT0005	480	464	6160	6160	22/02/2010	26/03/2010
MORICHITO-5B	MORT0005B	473	456	6855	6664	19/03/2011	01/04/2011
ZACAY-1	ZACY0001	521	498	7934	7884	26/08/2011	30/11/2011
BOTOTO-1	BOTO0001	25	450	6800	6551	28/02/2015	26/03/2015

2D Seismic

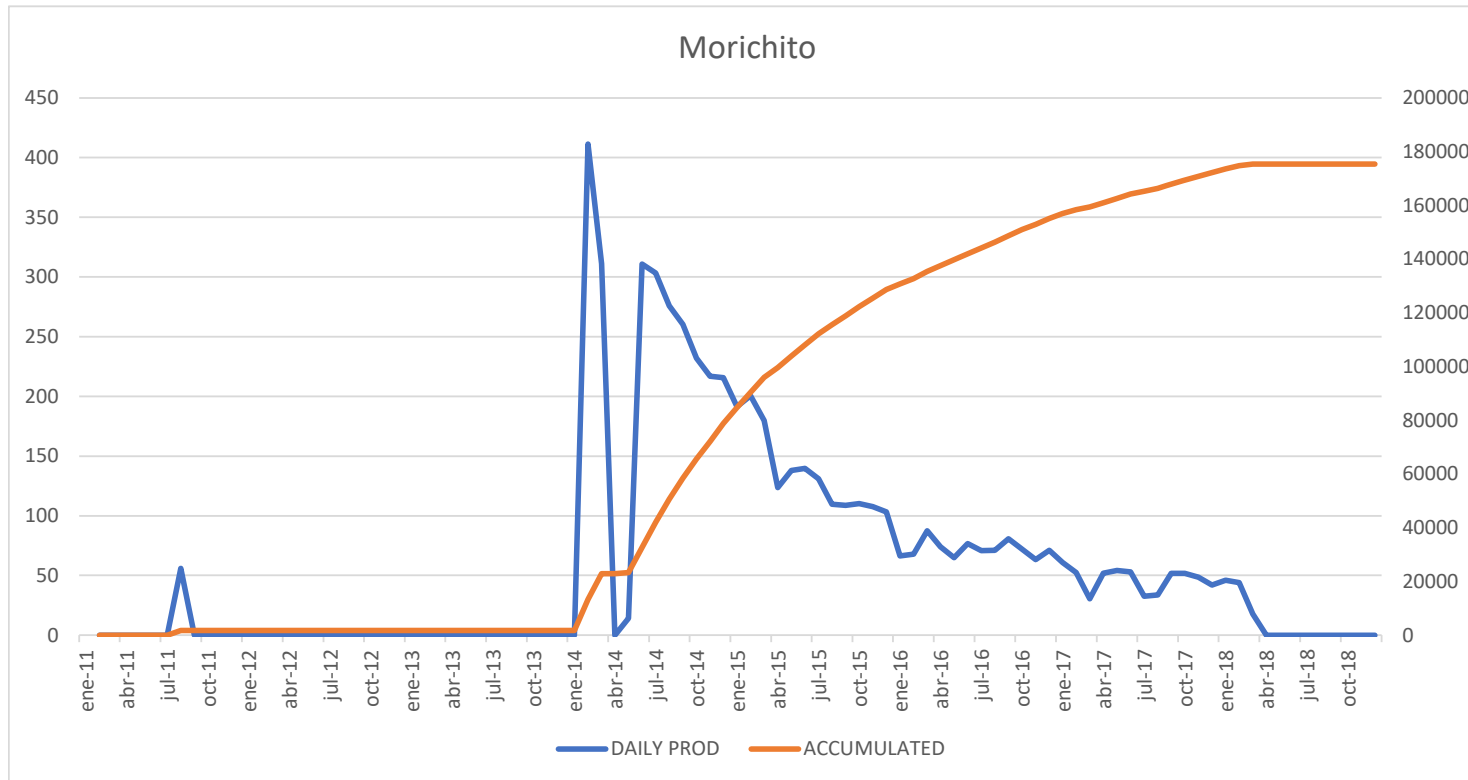
2D SURVEY	LINES	LENGTH	LENGTH_INSIDE
ARIMENA-72	2	74.49	9.09
CARUPANA-86	12	255.20	111.28
CPO1 2D-2010	17	194.17	157.03
CPO6-7 2D-2012	12	203.95	130.40
CPO7 2D-2009	6	133.90	85.01
CUSIANA-80	4	204.58	25.62
CUSIANA-81	6	201.64	20.82
GUARROJO-81 WAI	2	23.89	15.10
GUARROJO-82	6	71.68	46.94
OROCUE-88 META	4	42.34	21.24
RIO META-85	5	104.74	9.26
RIO META-86	2	22.01	1.46
RIO PLANAS-91	3	32.10	9.18
RIO PLANAS-92	3	39.42	5.24
SAN PEDRO-85	18	573.78	210.14
SANTIAGO ATALAYAS-73	4	139.85	47.00
Total general	106	2317.73	904.79

3D Seismic

NOMBRE	AREA_Km2	AREA INSIDE Km2
MORICHITO NORTE 3D-2012	89.905	17.997
MORICHITO 3D-2007	64.155	30.922
CASIMENA SUR 3D-2009	48.916	6.698
Area Total Inside		55.436



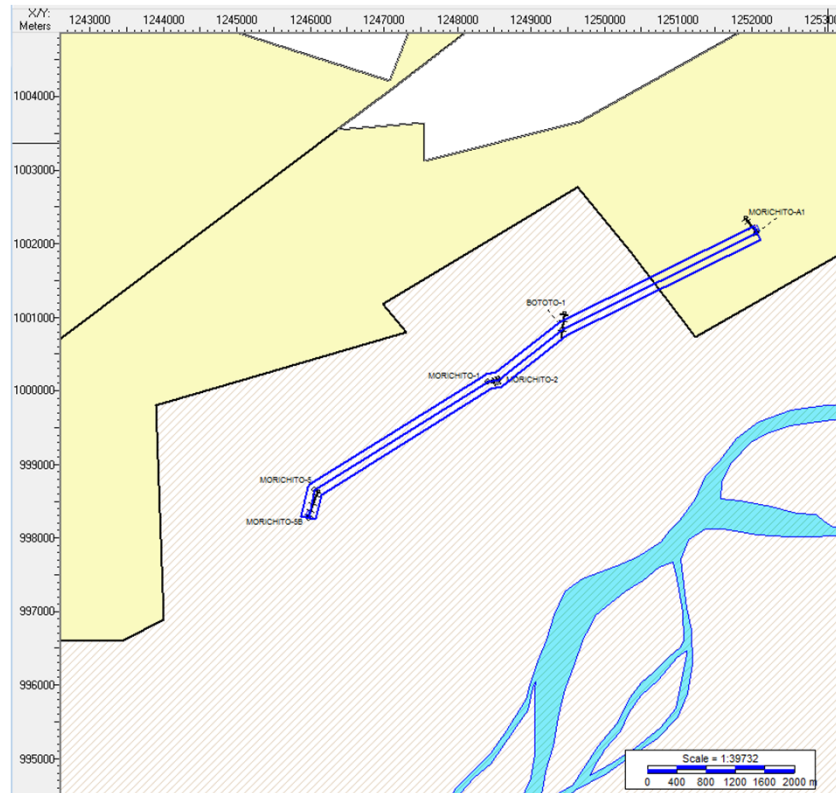
Morichito Field - Generalities



- The Morichito Hydrocarbon Exploration and Exploitation Contract was signed between the ANH and PETROPULI LTDA on May 31, 2005.
- The MORICHITO-5 well was drilled in March 2010, reaching a total depth of 6.160 feet and producing from the Mirador Formation.
- The range 5.900' – 5.902' of the Mirador Superior Formation was tested, which produced 191 barrels of fluids of which 68% was oil and 32% water.
- In the production life of the field between February 2014 and March 2018, 176,678 barrels of 22°API oil were produced.
- The Morichito 5 and Morichito 5B wells are currently inactive and pending to be abandoned.

Area	Discover Well	Start-End Explotation Period	Start-End Evaluation Period	Actual Status
MORICHITO	Morichito -2	18/09/2006 to 17/09/2008	N/A	Returned Area (May-2011)
MORICHITO -5	Morichito -5	02/09/2010	01/06/2012	No Production

Morichito Field - Wells

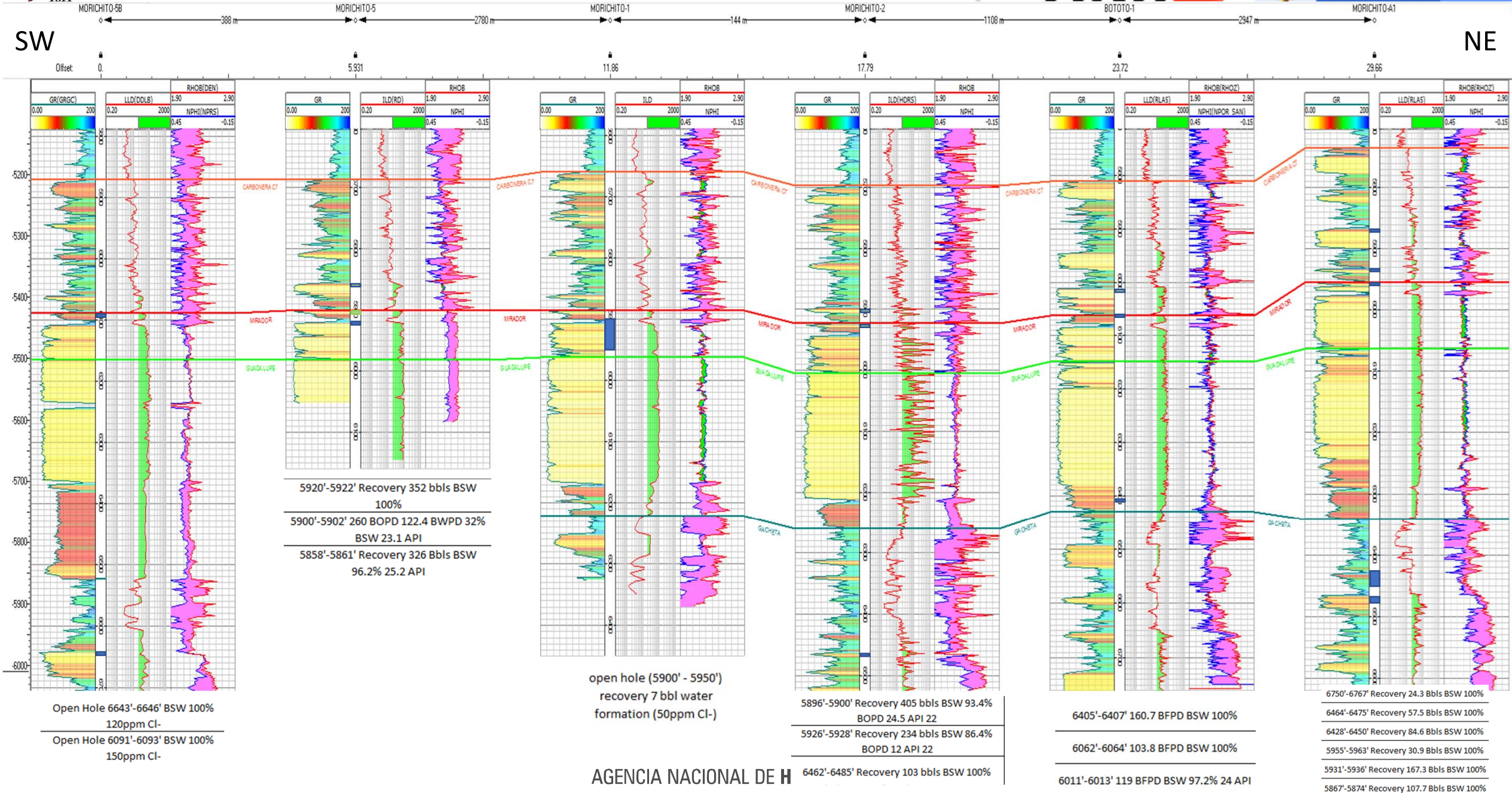


	MORICHITO-1	MORICHITO-2	MORICHITO-A1	MORICHITO-5	MORICHITO-5B	BOTOTO-1
OPERATOR	PETROCANADA OIL & GAS	PETROPULI	PETROPULI	PETROPULI	PETROPULI	DCX
SPUD DATE	07/02/1990	20/02/2006	29/04/2009	22/02/2010	19/03/2011	23/02/2015
END OF DRILLING	26/02/1990	19/03/2006	13/05/2009	06/03/2010	01/04/2011	09/02/2015
COMPLETION DATE		10/04/2006		26/03/2010		26/03/2015
FINAL STATUS	Plugged and abandoned	Suspended - P&A	Plugged and abandoned	Producer - Inactive	Dry Hole - Inactive	Producer - P&A
TESTS	open hole (5900' - 5950') recovery 7 bbl water formation (50ppm Cl-)	5896'-5900' Recovery 405 bbbls BSW 93.4% BOPD 24.5 API 22	6750'-6767' Recovery 24.3 Bbbls BSW 100%	5920'-5922' Recovery 352 bbbls BSW 100%	Open Hole 6643'-6646' BSW 100% 120ppm Cl-	6405'-6407' 160.7 BFPD BSW 100%
		6464'-6475' Recovery 57.5 Bbbls BSW 100%	6428'-6450' Recovery 84.6 Bbbls BSW 100%	5900'-5902' 260 BOPD 122.4 BOPD 32% BSW 23.1 API		6062'-6064' 103.8 BFPD BSW 100%
		5926'-5928' Recovery 234 bbbls BSW 86.4% BOPD 12 API 22	5955'-5963' Recovery 30.9 Bbbls BSW 100%	6091'-6093' BSW 100% 150ppm Cl-	6011'-6013' 119 BFPD BSW 97.2% 24 API	
		6462'-6485' Recovery 103 bbbls BSW 100%	5931'-5936' Recovery 167.3 Bbbls BSW 100%	5858'-5861' Recovery 326 Bbbls BSW 96.2% 25.2 API		
		5867'-5874' Recovery 107.7 Bbbls BSW 100%				

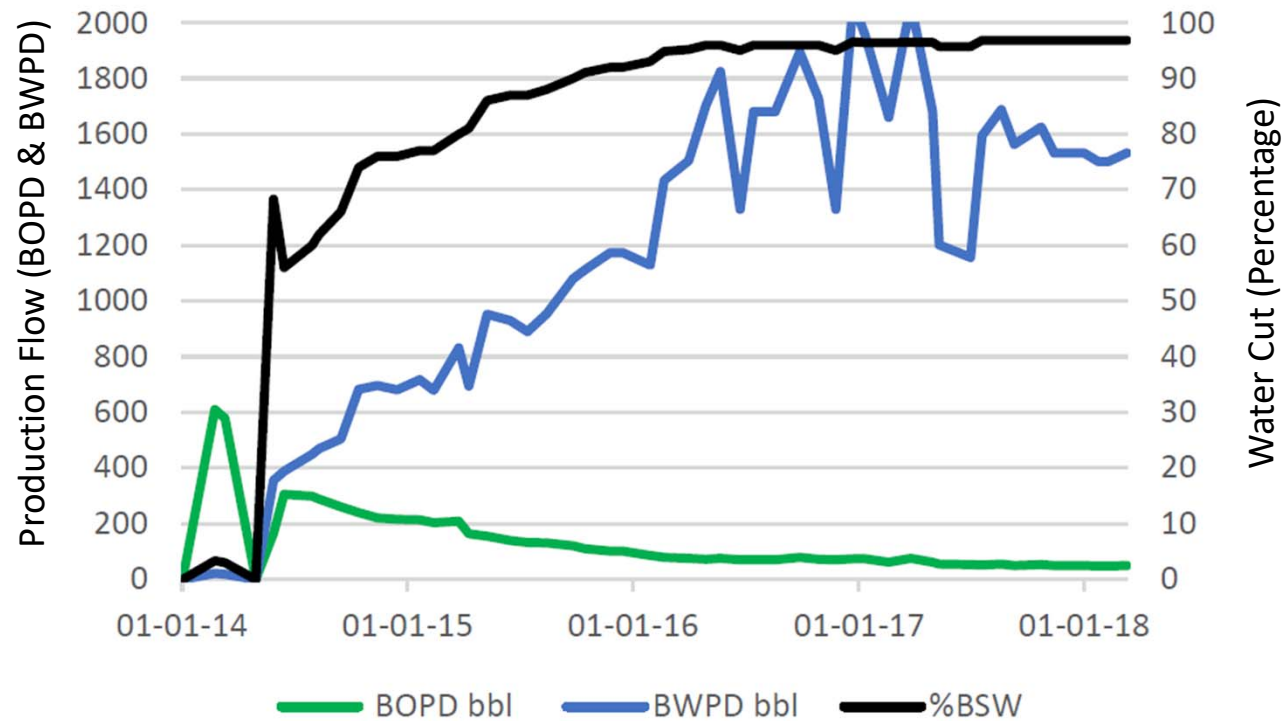
Morichito Field – Well Correlation

SW

NE



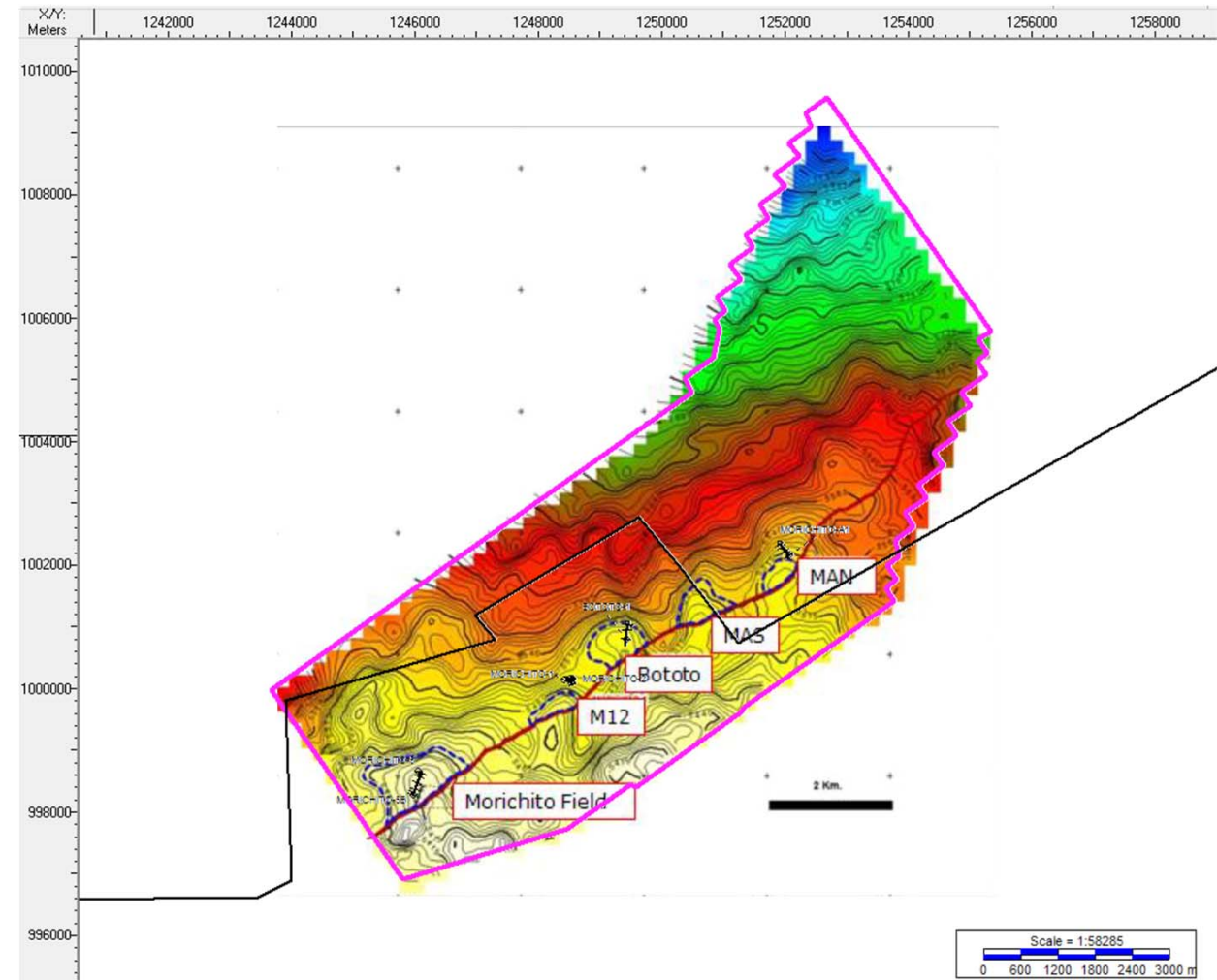
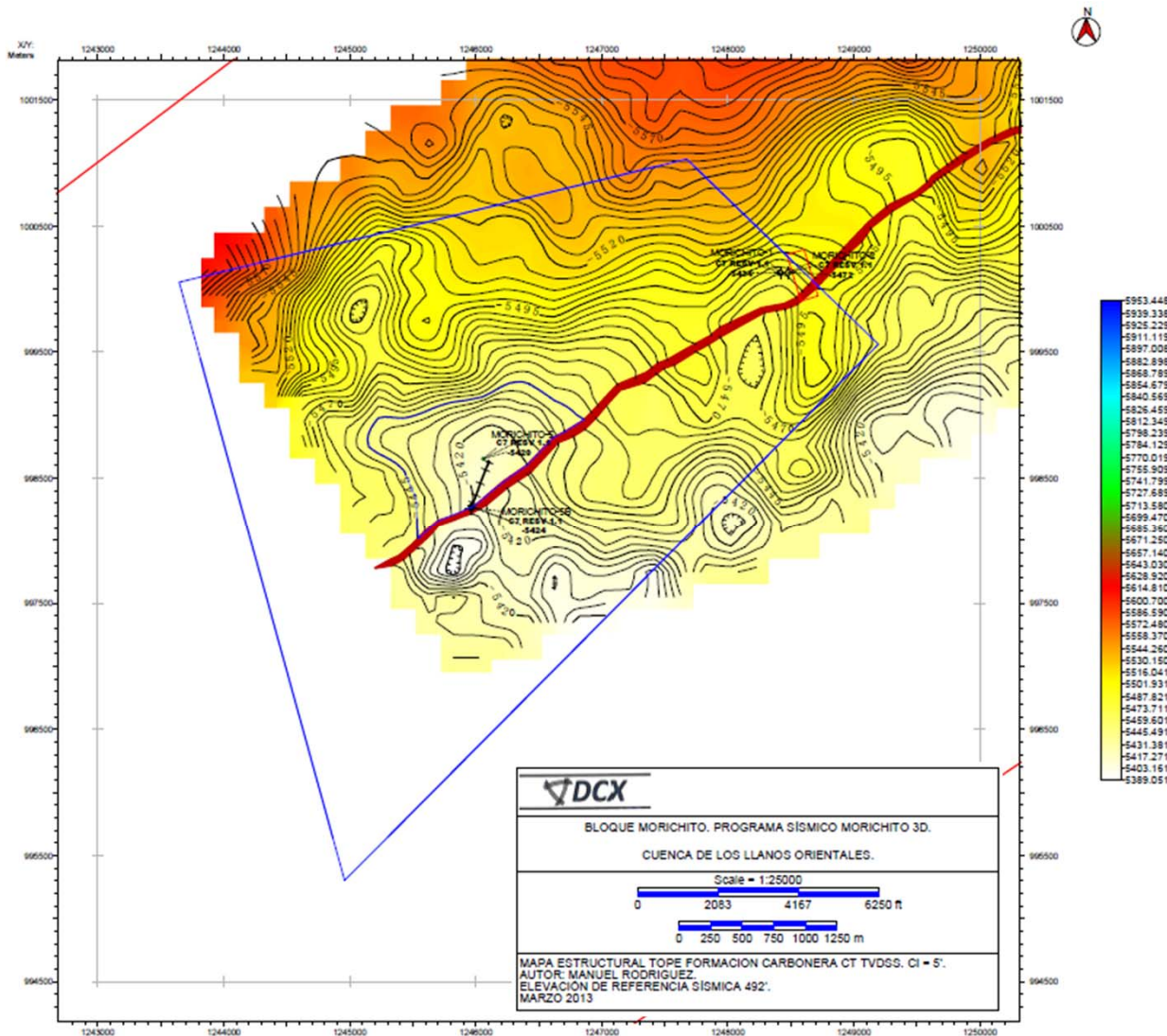
Morichito Field - Production



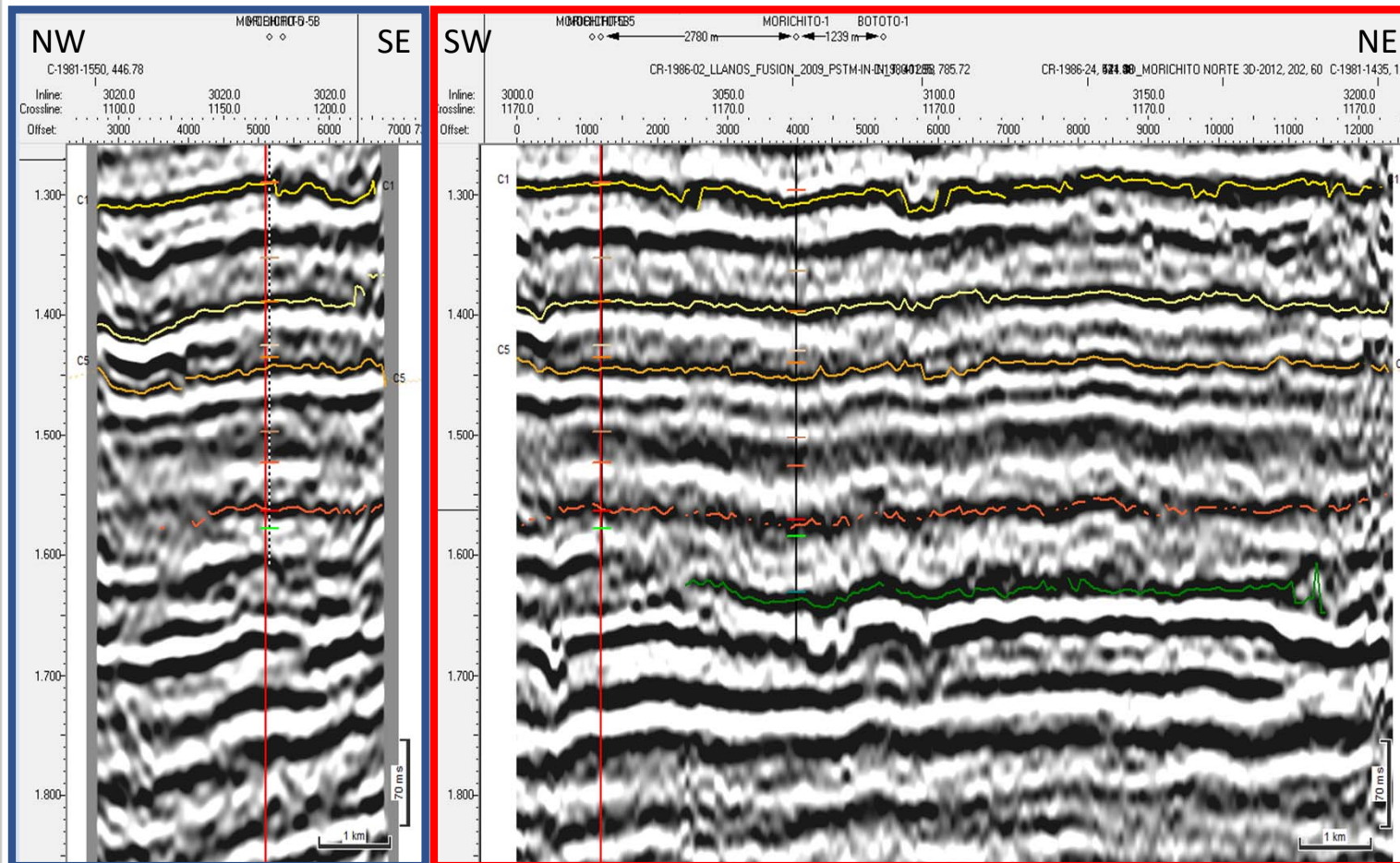
ACCUMULATIVE VALUES		
POZO	OIL (Bbls)	Water (Bbls)
Morichito -5	176678.53	1131916.00

The Morichito-5 well was put into continuous production as of February 6, 2014, by which time it had a cumulative production of 2556 bbl. The production history reflects a continued decline in oil production from approximately 600 BOPD in February 2014 to 49 BOPD in March 2018 and the gradual increase in water cut-off, from 3.3% to 96.9%. It is observed that the well was in production with Hydraulic Pumping as an artificial lifting system for approximately four years, which is why it can be monitored based on production dynamics, identify a trend and validate the estimate of recoverable volumes.

Morichito Field – Structural Maps

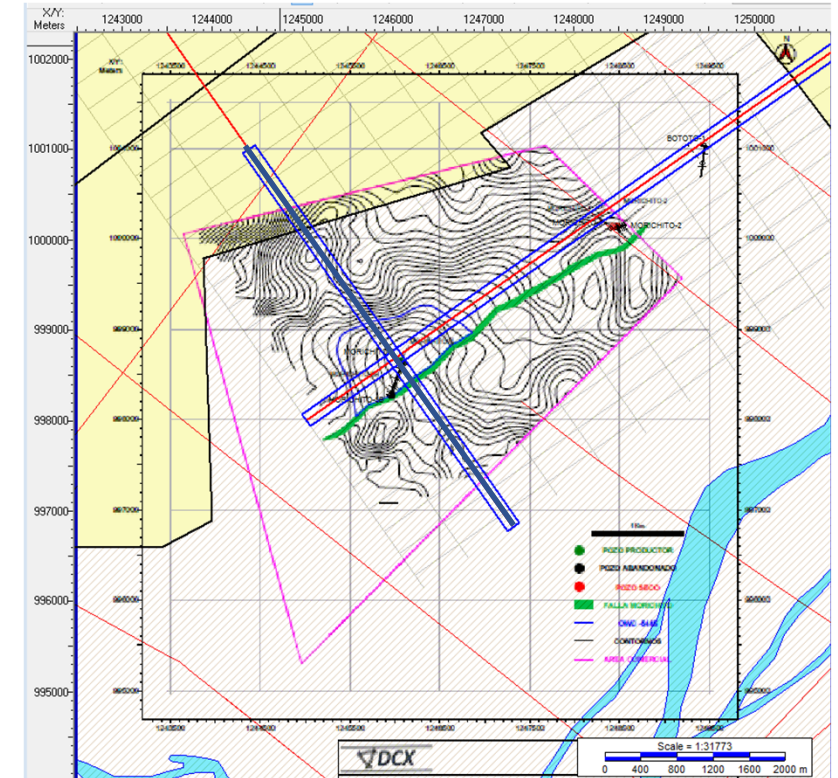


Morichito Field – Seismic Information

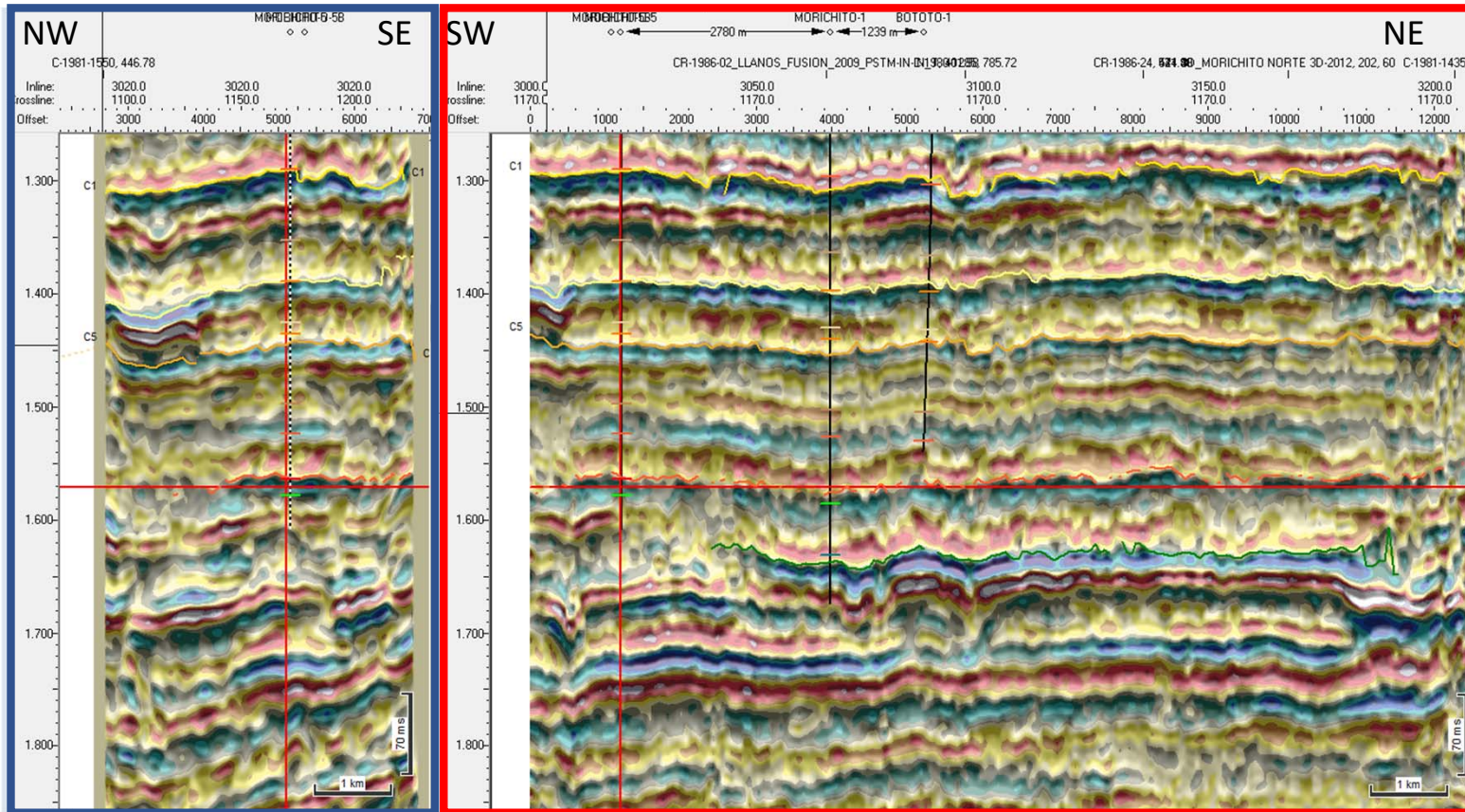


Dip Line IL3020
Morichito 3D

Strike Line XL1170
Morichito 3D

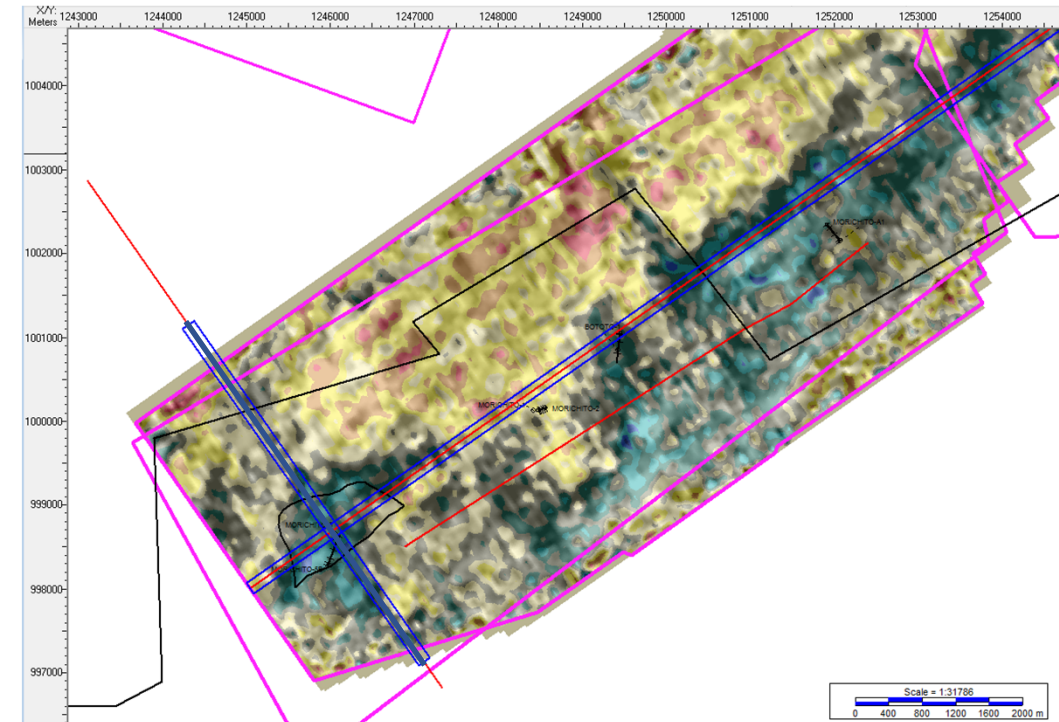


Morichito Field – Seismic Information (coblending Pseudorelief – Inversión)



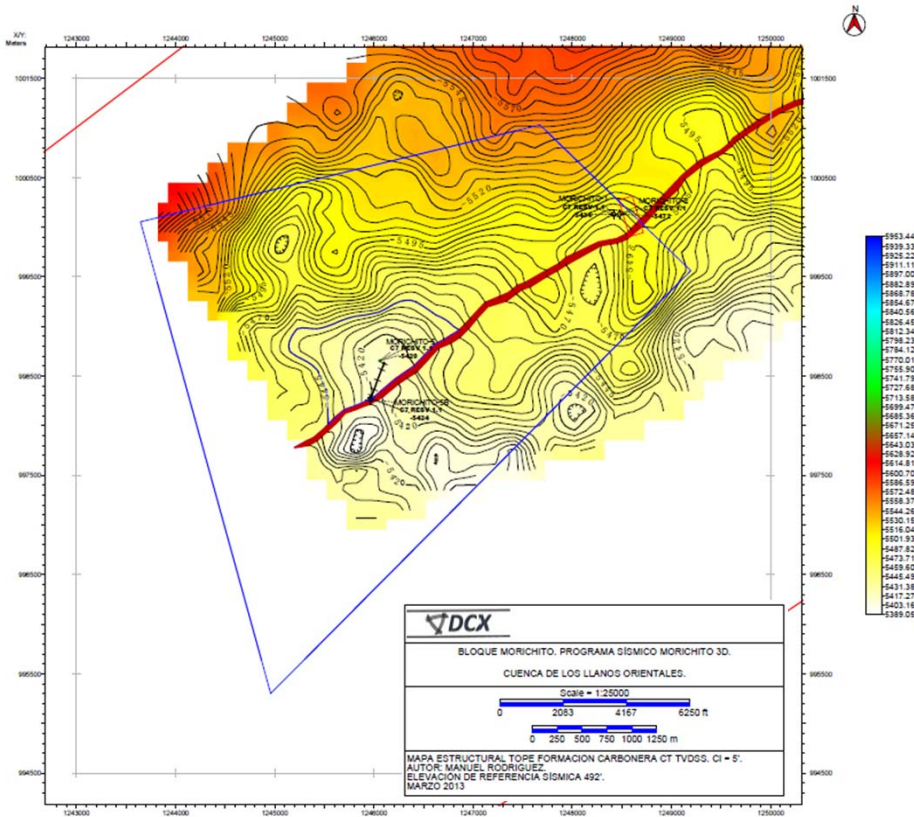
Dip Line IL3020
Morichito 3D

Strike Line XL1170
Morichito 3D



Time Slide 1570ms
Morichito 3D

Morichito Field – Volumetrics - Operator



Formation	Original Oil In Place (Bbls)	Current Recovery Factor (Percentage)	Accumulated Production (Bbls)	Estimated Ultimate Recovery EUR (bbls)	Expected Ultimate Recovery Factor (Percentage)	Remainent Resources (Bbls)
Mirador	1 000 269	17.66%	176 679	450 121	45%	273 442

Morichito

Layer 1 Oil-Water Date Generated: 23/02/2022

Grid type: Structure
Upper grid: Morichito_Mirador_Depth
Lower grid: Morichito_Base_13ft
OW Contact: -5445.00 Subsea

Net/Gross (NTG): 1.00
Porosity (Φ): 0.20
Water saturation (Sw): 0.65
Oil volume factor (Bo): 1.15
Oil recovery factor (ORF): 0.18

Current Recovery Factor 17.66%

Result (D-Deterministic)	Polygon area (M2)	Gross (Meter2 Feet)	Net (Meter2 Feet)	Pore (Meter2 Feet)	HC Pore (Meter2 Feet)	In-Place (STB)	Recoverable (STB)
(D) Morichito_area	925.000 M	8.603 MM	8.603 MM	1.721 MM	602.223 M	1.004 MM	176.738 M

Morichito

Layer 1 Oil-Water Date Generated: 23/02/2022

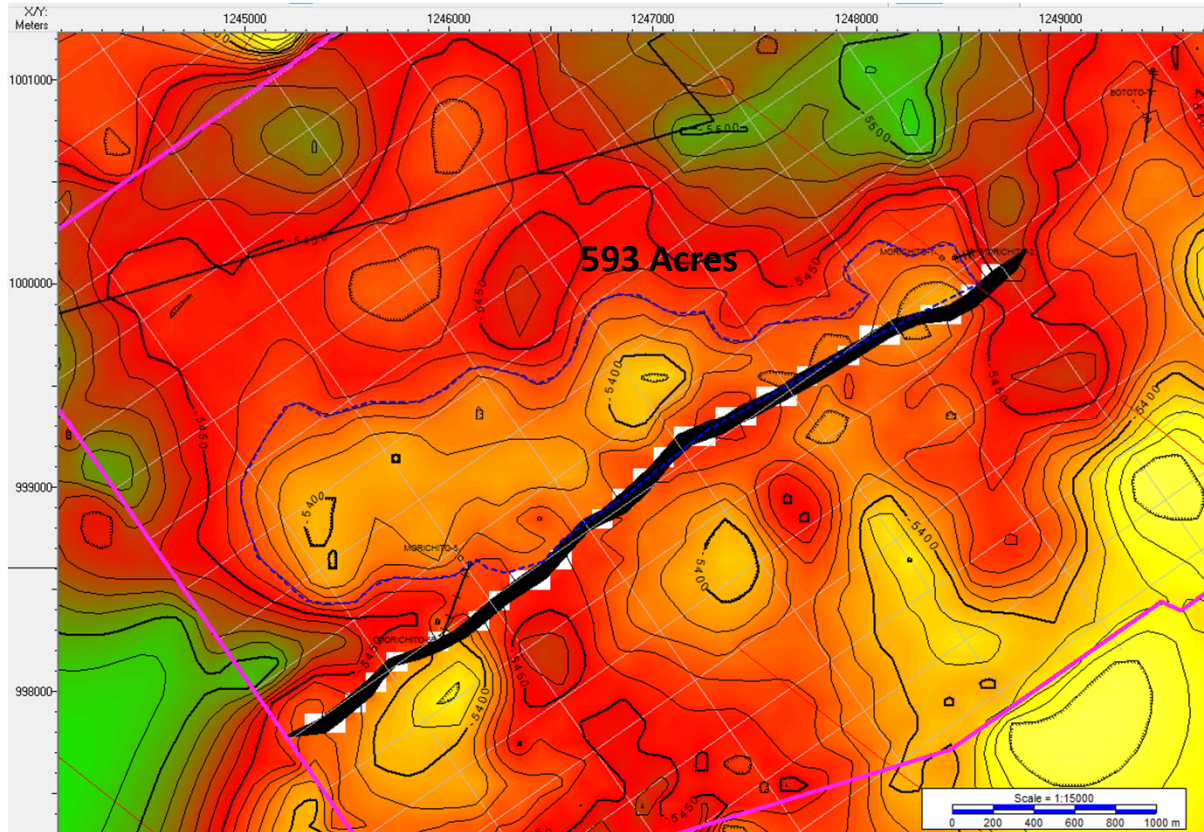
Grid type: Structure
Upper grid: Morichito_Mirador_Depth
Lower grid: Morichito_Base_13ft
OW Contact: -5445.00 Subsea

Net/Gross (NTG): 1.00
Porosity (Φ): 0.20
Water saturation (Sw): 0.65
Oil volume factor (Bo): 1.15
Oil recovery factor (ORF): 0.45

Expected Recovery Factor 45%

Result (D-Deterministic)	Polygon area (M2)	Gross (Meter2 Feet)	Net (Meter2 Feet)	Pore (Meter2 Feet)	HC Pore (Meter2 Feet)	In-Place (STB)	Recoverable (STB)
(D) Morichito_area	925.000 M	8.603 MM	8.603 MM	1.721 MM	602.223 M	1.004 MM	451.888 M

Morichito Field – Volumetrics - ANH



	Formation	Original Oil In Place (Bbls)	Recovery Factor (Percentage)	Accumulated Production (Bbls)	Estimated Ultimate Recovery EUR (bbls)	Remainent Resources (Bbls)
Case 1	Mirador	3 300 000	17.66%	176 679	582 760	406 081
Case 2	Mirador	3 300 000	25.00%	176 679	824 972	648 293

Morichito_Model_Vel

Layer 1 Oil-Water Date Generated: 24/02/2022

Grid type: Structure
 Upper grid: Model- Morichito_Depth_03_040_Mirador_Time_Morichito_Grid
 Lower grid: Model- Morichito_Depth_03_040_Mirador_Base_Time_Morichito_Grid
 OW Contact: -5445.00 Subsea
 Net/Gross (NTG): 1.00
 Porosity (Φ): 0.20
 Water saturation (Sw): 0.65
 Oil volume factor (Bo): 1.15
 Oil recovery factor (ORF): 0.18

Current Recovery Factor 17.66%

Result (D-Deterministic)	Polygon area (M2)	Gross (Meter2 Feet)	Net (Meter2 Feet)	Pore (Meter2 Feet)	HC Pore (Meter2 Feet)	In-Place (STB)	Recoverable (STB)
(D) Morichito_Mirador_De pth_model	2.170 MM	28.271 MM	28.271 MM	5.654 MM	1.979 MM	3.300 MM	582.760 M

Morichito_Model_Vel

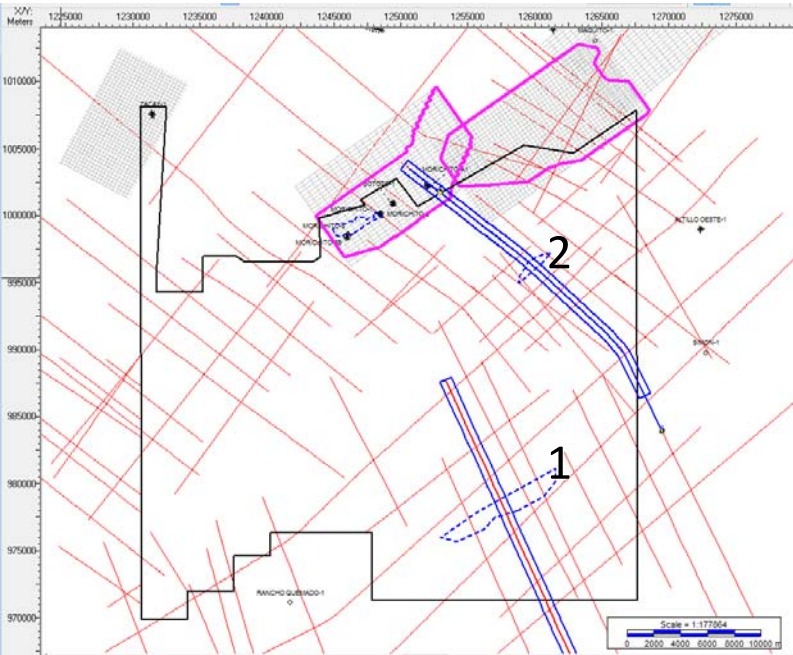
Layer 1 Oil-Water Date Generated: 24/02/2022

Grid type: Structure
 Upper grid: Model- Morichito_Depth_03_040_Mirador_Time_Morichito_Grid
 Lower grid: Model- Morichito_Depth_03_040_Mirador_Base_Time_Morichito_Grid
 OW Contact: -5445.00 Subsea
 Net/Gross (NTG): 1.00
 Porosity (Φ): 0.20
 Water saturation (Sw): 0.65
 Oil volume factor (Bo): 1.15
 Oil recovery factor (ORF): 0.25

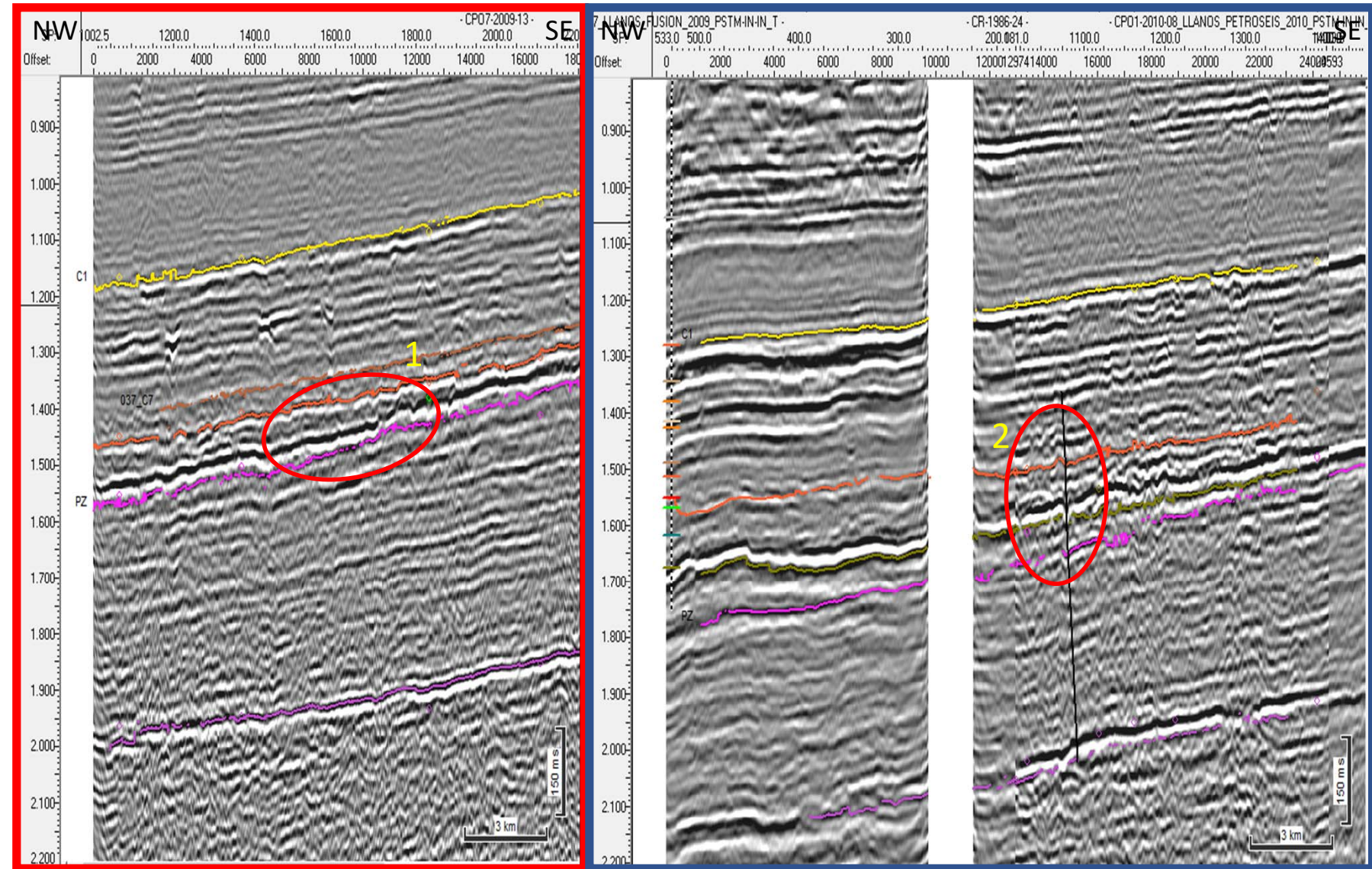
Recovery Factor 25%

Result (D-Deterministic)	Polygon area (M2)	Gross (Meter2 Feet)	Net (Meter2 Feet)	Pore (Meter2 Feet)	HC Pore (Meter2 Feet)	In-Place (STB)	Recoverable (STB)
(D) Morichito_Mirador_De pth_model	2.170 MM	28.271 MM	28.271 MM	5.654 MM	1.979 MM	3.300 MM	824.972 M

CPO 1-1 Prospectivity



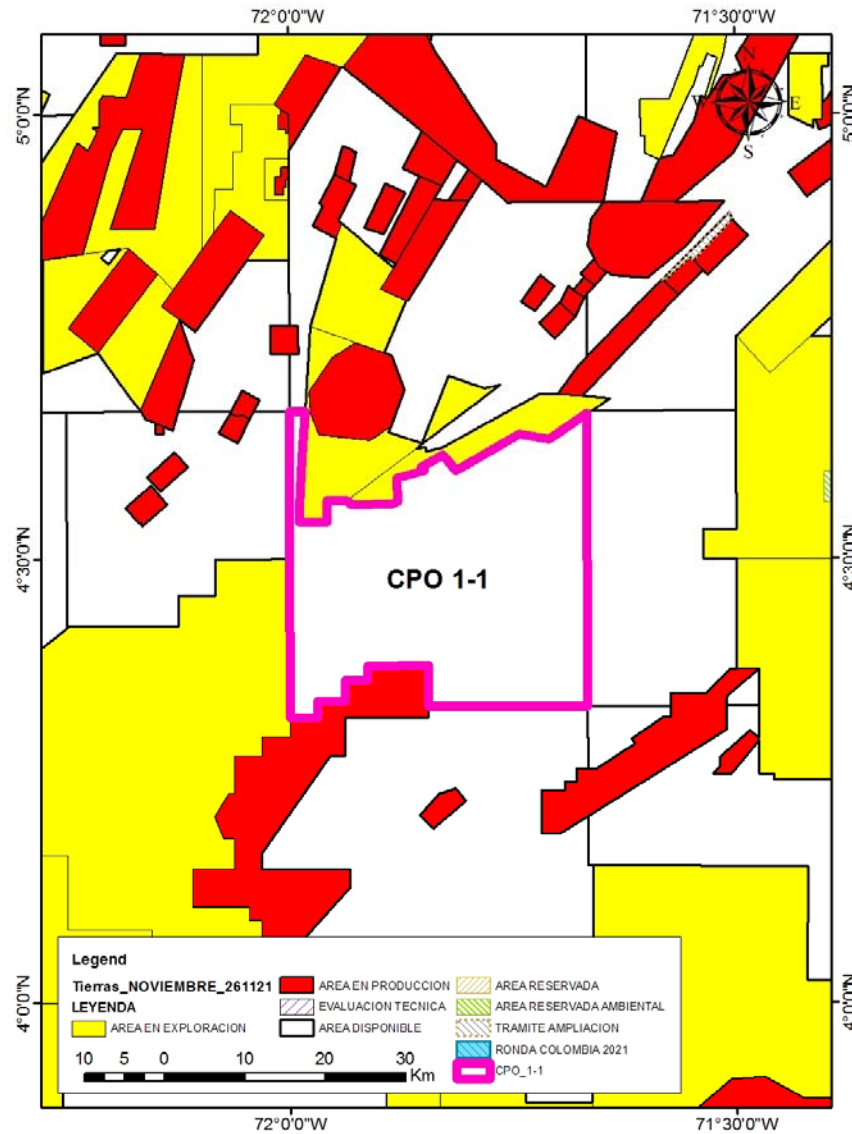
1. Pinch-out Guadalupe against Mirador-Carbonera Levels
2. Monocline against Antithetical Fault



Conclusions and Recomendations

- The Morichito field produced from the top of the Fm. Mirador about 176,679 Bbls of 23°API oil between 2014 and 2018.
- In the area, 5 wells were drilled, two of them with hydrocarbon manifestations and one that was a commercial producer.
- According to the operator, in the structure of Morichito 5 there are 273.442 barrels of oil remaining by increasing the recovery factor to 45%
- According to the interpretation of the ANH, for the structure of Morichito 5 there is a remnant of resources between 406.081 bbls and 648.293 bbls with recovery factors between 17,6% and 25% (Average used for evaluations)
- A reprocessing of the 3D seismic is necessary to validate the structures present in the Morichito area.
- In the area of CPO1-1 the possibilities of anticlinal traps against antithetical Normal fault and pinch-out of Guadalupe against levels of Mirador or Carbonera were observed, and a complete interpretation of the block is necessary to account for all the prospectivity of the area.

CPO 1-1 Land Map



**AREA TO NOMINATE
CPO 1-1 (MORICHITO)**

Thanks